

Datasheet for ABIN1880102
Dopamine Protein (DA) (BSA)[Go to Product page](#)

2 Images

Overview

| | |
|-------------------------------|--|
| Quantity: | 200 µg |
| Target: | Dopamine (DA) |
| Origin: | Chemical |
| Source: | Synthetic |
| Purification tag / Conjugate: | This Dopamine protein is labelled with BSA. |
| Application: | Immunoprecipitation (IP), SDS-PAGE (SDS), ELISA, Western Blotting (WB) |

Product Details

| | |
|---------|--------|
| Purity: | > 95 % |
|---------|--------|

Target Details

| | |
|--------------|-----------------------------|
| Target: | Dopamine (DA) |
| Abstract: | DA Products |
| Target Type: | Chemical |

Application Details

| | |
|--------------------|---|
| Application Notes: | Western blotting: 1:100-400 Immunocytochemistry in formalin fixed cells: 1:100-500 Immunohistochemistry in formalin fixed frozen section: 1:100-500 Immunohistochemistry in paraffin section: 1:50-200 Enzyme-linked Immunosorbent Assay: 1:100-200 |
|--------------------|---|

Application Details

Optimal working dilutions must be determined by end user.

Restrictions: For Research Use only

Handling

Reconstitution: Reconstitute in sterile PBS, pH 7.2 - pH 7.4.

Handling Advice: Avoid repeated freeze/thaw cycles

Storage: 4 °C

Storage Comment: Store at 2-8 °C for one month. Aliquot and store at -80 °C for 12 months.

Expiry Date: 12 months

Images

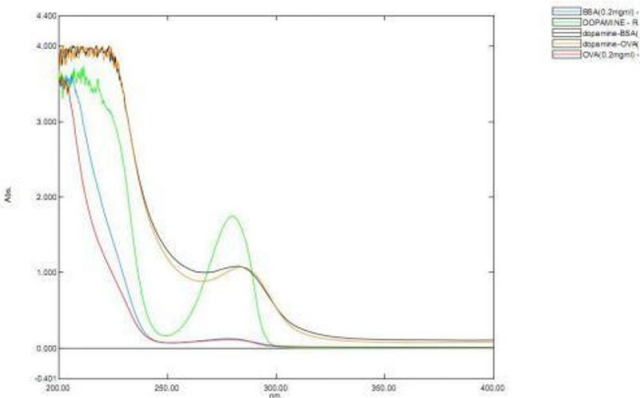


Image 1.

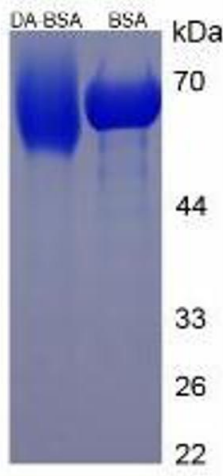


Image 2.