



[Go to Product page](#)

Datasheet for ABIN1880125

Dopamine Protein (DA) (Ovalbumin)

2 Images

Overview

Quantity:	200 µg
Target:	Dopamine (DA)
Origin:	Chemical
Source:	Synthetic
Purification tag / Conjugate:	This Dopamine protein is labelled with Ovalbumin.
Application:	Immunoprecipitation (IP), SDS-PAGE (SDS), ELISA, Western Blotting (WB)

Product Details

Purity: > 95 %

Target Details

Target:	Dopamine (DA)
Abstract:	DA Products
Target Type:	Chemical
Molecular Weight:	153.18 g/mol

Application Details

Application Notes:	Western blotting: 1:100-400 Immunocytochemistry in formalin fixed cells: 1:100-500 Immunohistochemistry in formalin fixed frozen section: 1:100-500 Immunohistochemistry in paraffin section: 1:50-200
--------------------	---

Application Details

Enzyme-linked Immunosorbent Assay: 1:100-200

Optimal working dilutions must be determined by end user.

Restrictions: For Research Use only

Handling

Reconstitution: Reconstitute in sterile PBS, pH 7.2 - pH 7.4.

Handling Advice: Avoid repeated freeze/thaw cycles

Storage: 4 °C

Storage Comment: Store at 2-8 °C for one month. Aliquot and store at -80 °C for 12 months.

Expiry Date: 12 months

Images

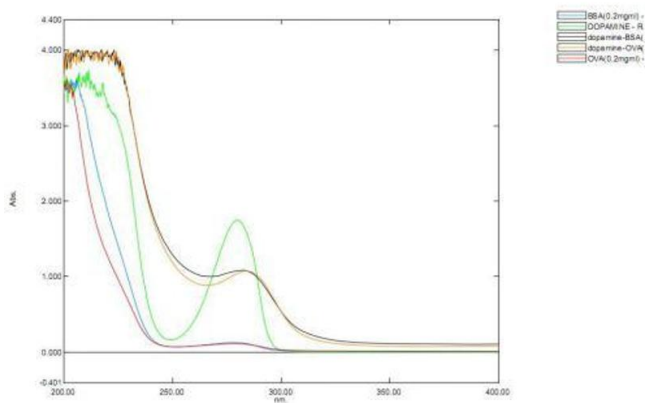


Image 1.

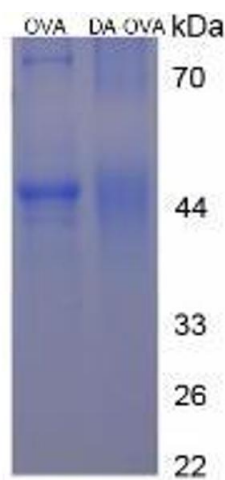


Image 2.