

Datasheet for ABIN1880146

**CAMP Protein (BSA)**[Go to Product page](#)**1** Image

## Overview

|                               |  |
|-------------------------------|--|
| Quantity:                     | 200 µg   |
| Target:                       | CAMP (cAMP)  |
| Origin:                       | Chemical   |
| Source:                       | Synthetic  |
| Purification tag / Conjugate: | This CAMP protein is labelled with BSA.                                |
| Application:                  | Immunoprecipitation (IP), SDS-PAGE (SDS), ELISA, Western Blotting (WB) |

## Product Details

|         |        |
|---------|--------|
| Purity: | > 95 % |
|---------|--------|

## Target Details

|              |   |
|--------------|---|
| Target:      | CAMP (cAMP)   |
| Abstract:    | <a href="#">cAMP Products</a>                                     |
| Target Type: | Chemical  |
| Pathways:    | <a href="#">Cellular Response to Molecule of Bacterial Origin</a> |

## Application Details

|          |  |
|----------|--|
| Comment: | The thermal stability is described by the loss rate of the target protein. The loss rate was determined by accelerated thermal degradation test, that is, incubate the protein at 37 °C for 48h, and no obvious degradation and precipitation were observed. (Referring from China Biological Products Standard, which was calculated by the Arrhenius equation.) The loss of this |
|----------|--|

Application Details

protein is less than 5% within the expiration date under appropriate storage condition.

Restrictions: For Research Use only

Handling

Reconstitution: Reconstitute in sterile PBS, pH 7.2 - pH 7.4.

Handling Advice: Avoid repeated freeze/thaw cycles

Storage: 4 °C

Storage Comment: Store at 2-8 °C for one month. Aliquot and store at -80 °C for 12 months.

Expiry Date: 12 months

Images

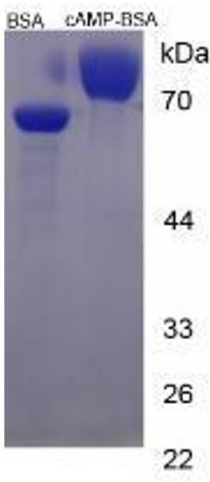


Image 1.