



[Go to Product page](#)

Datasheet for ABIN1880192

PROL1 Protein (BSA)

3 Images

Overview

Quantity:	200 µg
Target:	PROL1
Origin:	Chemical
Source:	Synthetic
Purification tag / Conjugate:	This PROL1 protein is labelled with BSA.
Application:	ELISA, Western Blotting (WB), SDS-PAGE (SDS), Immunoprecipitation (IP)

Product Details

Purity:	> 95 %
---------	--------

Target Details

Target:	PROL1
Alternative Name:	Opiorphin (OPI) (PROL1 Products)
Target Type:	Chemical

Application Details

Comment:	The thermal stability is described by the loss rate of the target protein. The loss rate was determined by accelerated thermal degradation test, that is, incubate the protein at 37 °C for 48h, and no obvious degradation and precipitation were observed. (Referring from China Biological Products Standard, which was calculated by the Arrhenius equation.) The loss of this protein is less than 5% within the expiration date under appropriate storage condition.
----------	--

Application Details

Restrictions: For Research Use only

Handling

Reconstitution: Reconstitute in sterile PBS, pH 7.2 - pH 7.4.

Handling Advice: Avoid repeated freeze/thaw cycles

Storage: 4 °C

Storage Comment: Store at 2-8 °C for one month. Aliquot and store at -80 °C for 12 months.

Expiry Date: 12 months

Images

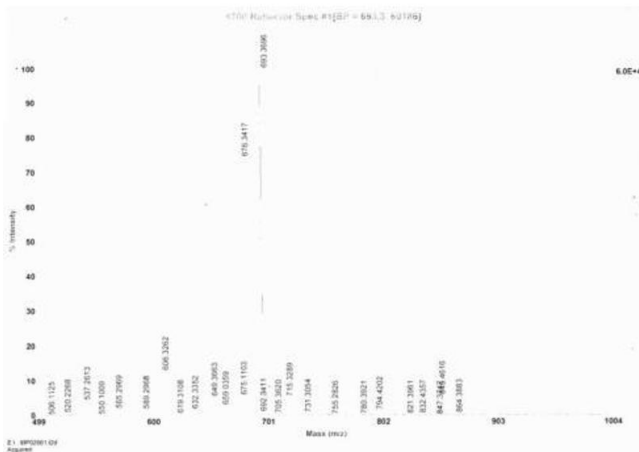


Image 1.

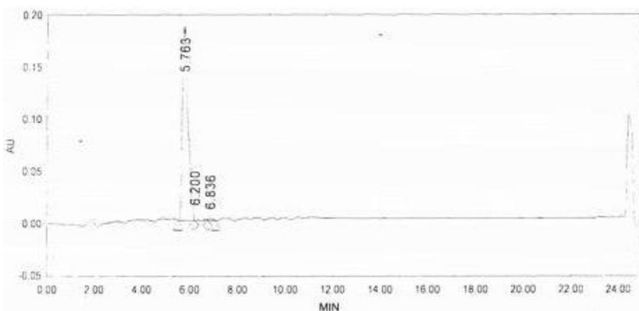


Image 2.

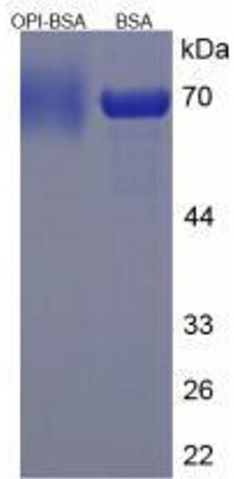


Image 3.