

Datasheet for ABIN1880227
Copeptin Protein (CPP) (KLH)



[Go to Product page](#)

2 Images

Overview

Quantity:	200 µg
Target:	Copeptin (CPP)
Origin:	Human
Source:	Synthetic
Protein Type:	Synthetic
Purification tag / Conjugate:	This Copeptin protein is labelled with KLH.
Application:	ELISA, Western Blotting (WB), Immunoprecipitation (IP), SDS-PAGE (SDS)

Product Details

Characteristics:	Predicted isoelectric point: 4.2
Purity:	> 95 %

Target Details

Target:	Copeptin (CPP)
Abstract:	CPP Products
Molecular Weight:	1598.7Da
Pathways:	Hormone Activity

Application Details

Restrictions:	For Research Use only
---------------	-----------------------

Handling

Reconstitution: Reconstitute in sterile PBS, pH 7.2- pH 7.4.

Handling Advice: Avoid repeated freeze/thaw cycles.

Storage: 4 °C/-80 °C

Storage Comment: Store at 2-8 °C for one month. Aliquot and store at -80 °C for 12 months.

Images



Image 1.

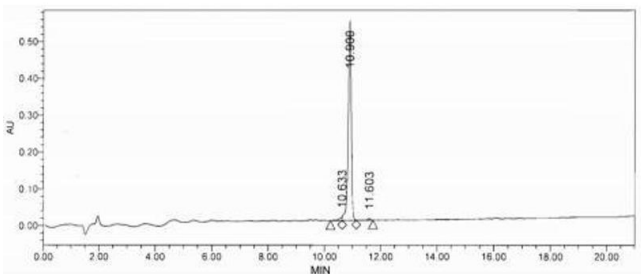


Image 2.