

Datasheet for ABIN1880228

COL18A1 Protein (KLH)**2** Images[Go to Product page](#)

Overview

| | |
|-------------------------------|--|
| Quantity: | 200 µg |
| Target: | COL18A1 |
| Origin: | Human |
| Source: | Synthetic |
| Purification tag / Conjugate: | This COL18A1 protein is labelled with KLH. |
| Application: | SDS-PAGE (SDS), Western Blotting (WB), ELISA, Immunoprecipitation (IP) |

Product Details

| | |
|---------|--------|
| Purity: | > 95 % |
|---------|--------|

Target Details

| | |
|-------------------|--|
| Target: | COL18A1 |
| Alternative Name: | Endostatin (ES) (COL18A1 Products) |
| Target Type: | Chemical |
| Molecular Weight: | 1935.2 Da |

Application Details

| | |
|----------|--|
| Comment: | The thermal stability is described by the loss rate of the target protein. The loss rate was determined by accelerated thermal degradation test, that is, incubate the protein at 37 °C for 48h, and no obvious degradation and precipitation were observed. (Referring from China Biological Products Standard, which was calculated by the Arrhenius equation.) The loss of this |
|----------|--|

Application Details

protein is less than 5% within the expiration date under appropriate storage condition.

Restrictions: For Research Use only

Handling

Reconstitution: Reconstitute in sterile PBS, pH 7.2 - pH 7.4.

Handling Advice: Avoid repeated freeze/thaw cycles

Storage: 4 °C

Storage Comment: Store at 2-8 °C for one month. Aliquot and store at -80 °C for 12 months.

Expiry Date: 12 months

Images

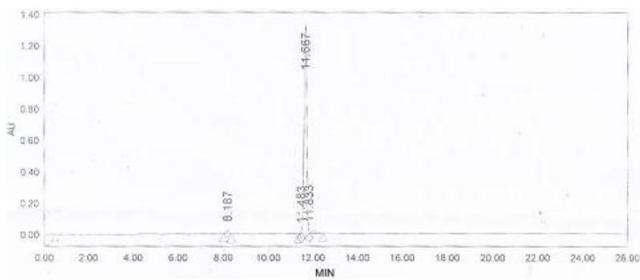


Image 1.

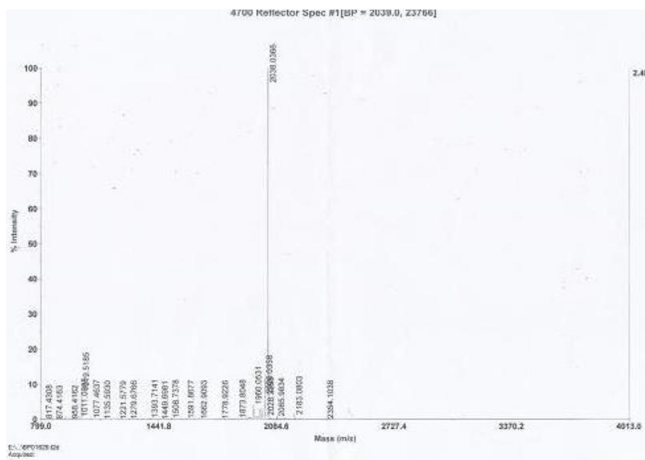


Image 2.