

Datasheet for ABIN1880231  
**Inhibin alpha Protein (KLH)**[Go to Product page](#)

## 2 Images

## Overview

Quantity:	200 µg
Target:	Inhibin alpha (INHA)
Origin:	Human
Source:	Synthetic
Purification tag / Conjugate:	This Inhibin alpha protein is labelled with KLH.
Application:	Western Blotting (WB), SDS-PAGE (SDS), ELISA, Immunoprecipitation (IP)

## Product Details

Purity:	> 95 %
---------	--------

## Target Details

Target:	Inhibin alpha (INHA)
Alternative Name:	Inhibin A (INHA) ( <a href="#">INHA Products</a> )
Molecular Weight:	2377.6 Da
Pathways:	<a href="#">Peptide Hormone Metabolism</a> , <a href="#">Hormone Activity</a> , <a href="#">Negative Regulation of Hormone Secretion</a>

## Application Details

Comment:	The thermal stability is described by the loss rate of the target protein. The loss rate was determined by accelerated thermal degradation test, that is, incubate the protein at 37 °C for 48h, and no obvious degradation and precipitation were observed. (Referring from China Biological Products Standard, which was calculated by the Arrhenius equation.) The loss of this
----------	--

Application Details

	protein is less than 5% within the expiration date under appropriate storage condition.
Restrictions:	For Research Use only
Handling	
Format:	Lyophilized
Reconstitution:	Reconstitute in sterile PBS, pH 7.2 - pH 7.4.
Buffer:	Supplied as lyophilized form in PBS, pH 7.4, containing 5 % trehalose, 0.01 % sarcosyl.
Handling Advice:	Avoid repeated freeze/thaw cycles
Storage:	4 °C
Storage Comment:	Store at 2-8 °C for one month. Aliquot and store at -80 °C for 12 months.
Expiry Date:	12 months

Images

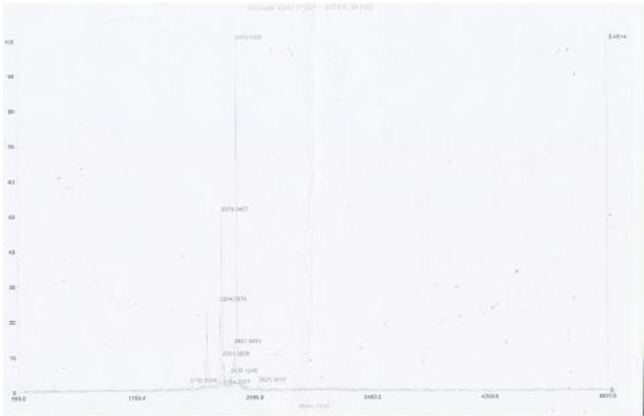


Image 1.

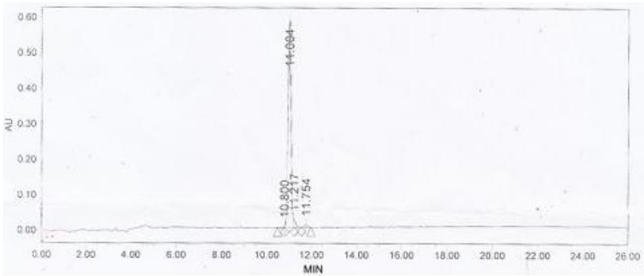


Image 2.