



[Go to Product page](#)

Datasheet for ABIN1880264
Pepsin Protein (Ovalbumin)

1 Image

1 Publication

Overview

| | |
|-------------------------------|--|
| Quantity: | 200 µg |
| Target: | Pepsin |
| Origin: | Human |
| Source: | Synthetic |
| Protein Type: | Synthetic |
| Purification tag / Conjugate: | This Pepsin protein is labelled with Ovalbumin. |
| Application: | Immunoprecipitation (IP), SDS-PAGE (SDS), ELISA, Western Blotting (WB) |

Product Details

| | |
|------------------|----------------------------------|
| Characteristics: | Predicted isoelectric point: 3.4 |
| Purity: | > 95 % |

Target Details

| | |
|-------------------|---|
| Target: | Pepsin |
| Alternative Name: | Pepsin (PP) (Pepsin Products) |
| Molecular Weight: | 2846.1Da |

Application Details

| | |
|---------------|-----------------------|
| Restrictions: | For Research Use only |
|---------------|-----------------------|

Handling

Reconstitution: Reconstitute in sterile PBS, pH 7.2- pH 7.4.

Handling Advice: Avoid repeated freeze/thaw cycles.

Storage: 4 °C/-80 °C

Storage Comment: Store at 2-8 °C for one month. Aliquot and store at -80 °C for 12 months.

Publications

Product cited in: Oppermann, Gnad, Olsen, Hornberger, Greff, Kéri, Mann, Daub: "Large-scale proteomics analysis of the human kinome." in: **Molecular & cellular proteomics : MCP**, Vol. 8, Issue 7, pp. 1751-64, (2009) ([PubMed](#)).

Deloukas, Matthews, Ashurst, Burton, Gilbert, Jones, Stavrides, Almeida, Babbage, Bagguley, Bailey, Barlow, Bates, Beard, Beare, Beasley, Bird, Blakey, Bridgeman, Brown, Buck, Burrill, Butler, Carder et al.: "The DNA sequence and comparative analysis of human chromosome 20. ..." in: **Nature**, Vol. 414, Issue 6866, pp. 865-71, (2002) ([PubMed](#)).

Images

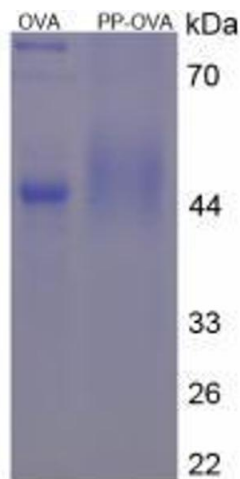


Image 1.