



Datasheet for ABIN1880269

Salusin alpha Protein (Salusin alpha) (Ovalbumin)



[Go to Product page](#)

3 Images

Overview

| | |
|-------------------------------|--|
| Quantity: | 200 µg |
| Target: | Salusin alpha |
| Origin: | Human |
| Source: | Synthetic |
| Purification tag / Conjugate: | This Salusin alpha protein is labelled with Ovalbumin. |
| Application: | SDS-PAGE (SDS), Western Blotting (WB), Immunoprecipitation (IP), ELISA |

Product Details

Purity: > 95 %

Target Details

| | |
|-------------------|---|
| Target: | Salusin alpha |
| Alternative Name: | Salusin alpha (SALa) (Salusin alpha Products) |

Application Details

Comment: The thermal stability is described by the loss rate of the target protein. The loss rate was determined by accelerated thermal degradation test, that is, incubate the protein at 37 °C for 48h, and no obvious degradation and precipitation were observed. (Referring from China Biological Products Standard, which was calculated by the Arrhenius equation.) The loss of this protein is less than 5% within the expiration date under appropriate storage condition.

Restrictions: For Research Use only

Handling

| | |
|------------------|---|
| Reconstitution: | Reconstitute in sterile PBS, pH 7.2 - pH 7.4. |
| Handling Advice: | Avoid repeated freeze/thaw cycles |
| Storage: | 4 °C |
| Storage Comment: | Store at 2-8 °C for one month. Aliquot and store at -80 °C for 12 months. |
| Expiry Date: | 12 months |

Images

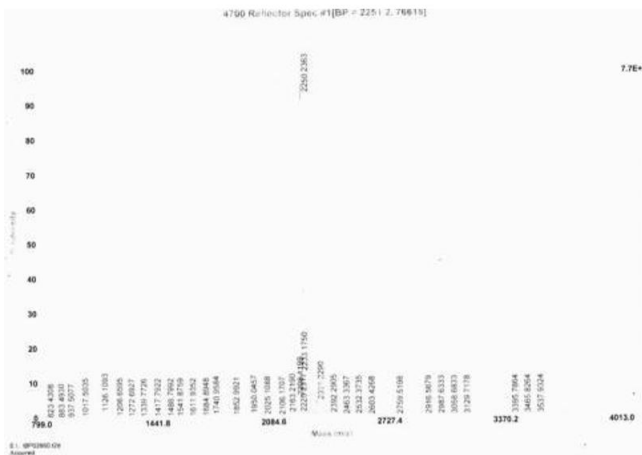


Image 1.

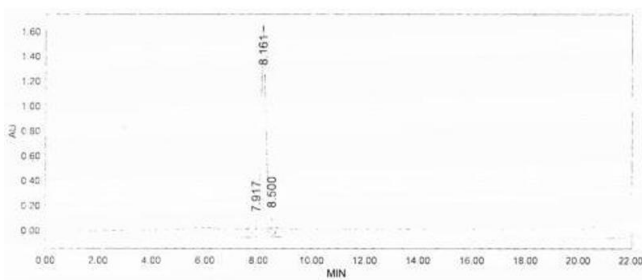


Image 2.

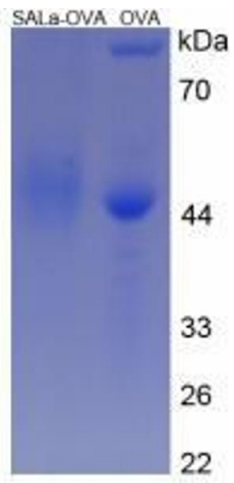


Image 3.