



[Go to Product page](#)

Datasheet for ABIN1880286

## Gibberellic Acid Protein (GA) (Ovalbumin)

### 1 Image

#### Overview

Quantity:	200 µg
Target:	Gibberellic Acid (GA)
Origin:	General
Source:	Synthetic
Protein Type:	Synthetic
Purification tag / Conjugate:	This Gibberellic Acid protein is labelled with Ovalbumin.
Application:	Immunoprecipitation (IP), SDS-PAGE (SDS), ELISA, Western Blotting (WB)

#### Product Details

Characteristics:	Chemical Formula: C <sub>19</sub> H <sub>22</sub> O <sub>6</sub>
Purity:	> 95 %

#### Target Details

Target:	Gibberellic Acid (GA)
Abstract:	<a href="#">GA Products</a>
Target Type:	Hormone
Molecular Weight:	346.4 g/mol

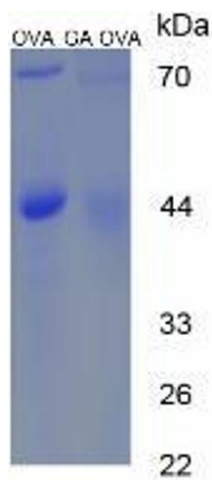
#### Application Details

Restrictions:	For Research Use only
---------------	-----------------------

## Handling

Format:	Lyophilized
Reconstitution:	Reconstitute in sterile PBS, pH 7.2- pH 7.4.
Buffer:	PBS, pH 7.4, containing 5 % trehalose, 0.01 % sarcosyl.
Handling Advice:	Avoid repeated freeze/thaw cycles.
Storage:	4 °C/-80 °C
Storage Comment:	Store at 2-8 °C for one month. Aliquot and store at -80 °C for 12 months.

## Images



**Image 1.**