



Datasheet for ABIN1880302  
**E2 Estradiol Protein (Ovalbumin)**



[Go to Product page](#)

2 Images

Overview

Quantity:	200 µg
Target:	E2 Estradiol
Origin:	General
Source:	Synthetic
Protein Type:	Synthetic
Purification tag / Conjugate:	This E2 Estradiol protein is labelled with Ovalbumin.
Application:	Immunoprecipitation (IP), SDS-PAGE (SDS), ELISA, Western Blotting (WB)

Product Details

Characteristics:	Chemical Formula: C <sub>18</sub> H <sub>24</sub> O <sub>2</sub>
Purity:	> 90 %

Target Details

Target:	E2 Estradiol
Alternative Name:	Estradiol (E2) ( <a href="#">E2 Estradiol Products</a> )
Target Type:	Chemical
Molecular Weight:	272.38 g/mol

Application Details

Restrictions:	For Research Use only
---------------	-----------------------

## Handling

Reconstitution: Reconstitute in sterile PBS, pH 7.2- pH 7.4.

Handling Advice: Avoid repeated freeze/thaw cycles.

Storage: 4 °C/-80 °C

Storage Comment: Store at 2-8 °C for one month. Aliquot and store at -80 °C for 12 months.

## Images

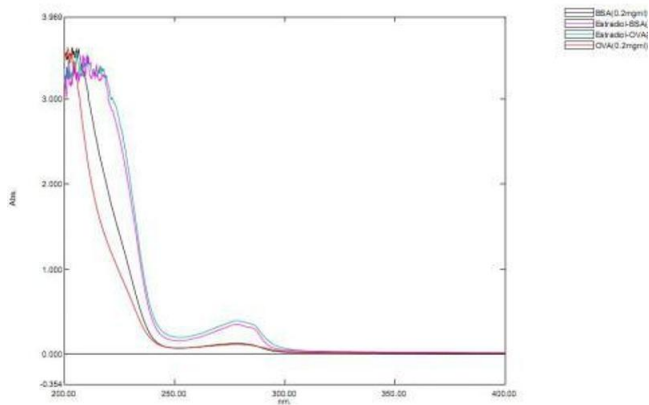


Image 1.

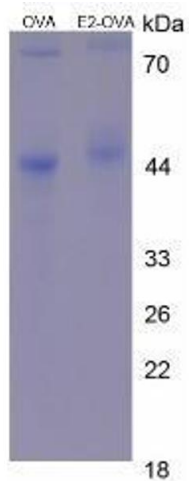


Image 2.