



[Go to Product page](#)

Datasheet for ABIN1880304

Estriol (E3) Protein (Ovalbumin)

1 Image

Overview

Quantity:	200 µg
Target:	Estriol (E3)
Origin:	General
Source:	Synthetic
Protein Type:	Synthetic
Purification tag / Conjugate:	This Estriol (E3) protein is labelled with Ovalbumin.
Application:	Immunoprecipitation (IP), SDS-PAGE (SDS), ELISA, Western Blotting (WB)

Product Details

Characteristics:	Chemical Formula: C ₁₈ H ₂₄ O ₃
Purity:	> 95 %

Target Details

Target:	Estriol (E3)
Abstract:	Estriol (E3) Products
Target Type:	Hormone
Molecular Weight:	288.38 g/mol

Application Details

Restrictions:	For Research Use only
---------------	-----------------------

Handling

Reconstitution: Reconstitute in sterile PBS, pH 7.2- pH 7.4.

Handling Advice: Avoid repeated freeze/thaw cycles.

Storage: 4 °C/-80 °C

Storage Comment: Store at 2-8 °C for one month. Aliquot and store at -80 °C for 12 months.

Images

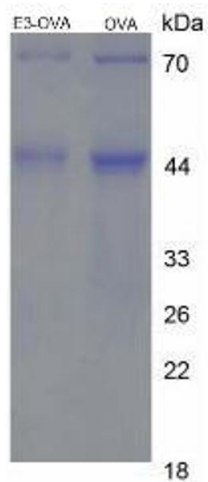


Image 1.