

Datasheet for ABIN1881062
anti-ANXA6 antibody (C-Term)



[Go to Product page](#)

1 Image

Overview

| | |
|----------------------|--------------------------------------|
| Quantity: | 400 µL |
| Target: | ANXA6 |
| Binding Specificity: | AA 147-175, C-Term |
| Reactivity: | Human |
| Host: | Rabbit |
| Clonality: | Polyclonal |
| Conjugate: | This ANXA6 antibody is un-conjugated |
| Application: | Western Blotting (WB) |

Product Details

| | |
|-----------------------|--|
| Immunogen: | This ANXA6 antibody is generated from rabbits immunized with a KLH conjugated synthetic peptide between 147-175 amino acids from the C-terminal region of human ANXA6. |
| Clone: | RB40950 |
| Isotype: | Ig Fraction |
| Predicted Reactivity: | B |
| Purification: | This antibody is purified through a protein A column, followed by peptide affinity purification. |

Target Details

| | |
|-------------------|--|
| Target: | ANXA6 |
| Alternative Name: | ANXA6 (ANXA6 Products) |

Target Details

| | |
|-------------------|--|
| Background: | ANXA6 may associate with CD21. May regulate the release of Ca(2+) from intracellular stores. |
| Molecular Weight: | 75873 |
| NCBI Accession: | NP_001146 , NP_001180473 |
| UniProt: | P08133 |

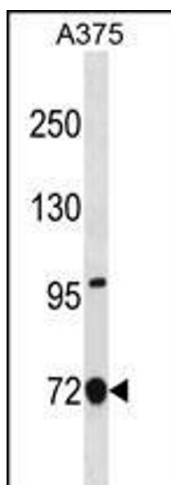
Application Details

| | |
|--------------------|-----------------------|
| Application Notes: | WB: 1:1000 |
| Restrictions: | For Research Use only |

Handling

| | |
|--------------------|--|
| Format: | Liquid |
| Buffer: | Purified polyclonal antibody supplied in PBS with 0.09 % (W/V) sodium azide. |
| Preservative: | Sodium azide |
| Precaution of Use: | This product contains Sodium azide: a POISONOUS AND HAZARDOUS SUBSTANCE which should be handled by trained staff only. |
| Storage: | 4 °C, -20 °C |
| Expiry Date: | 6 months |

Images



Western Blotting

Image 1. ANXA6 Antibody (C-term) (ABIN1881062 and ABIN2838733) western blot analysis in cell line lysates (35 µg/lane). This demonstrates the ANXA6 antibody detected the ANXA6 protein (arrow).