



[Go to Product page](#)

Datasheet for ABIN1881081

anti-ATG13 antibody (pSer355)

1 Image

5 Publications

Overview

Quantity:	400 µL
Target:	ATG13
Binding Specificity:	pSer355
Reactivity:	Human
Host:	Rabbit
Clonality:	Polyclonal
Conjugate:	This ATG13 antibody is un-conjugated
Application:	Dot Blot (DB)

Product Details

Immunogen:	This ATG13 Antibody is generated from rabbits immunized with a KLH conjugated synthetic phosphopeptide corresponding to amino acid residues surrounding S355 of human ATG13.
Clone:	RB40774
Isotype:	Ig Fraction
Predicted Reactivity:	M
Purification:	This antibody is purified through a protein A column, followed by peptide affinity purification.

Target Details

Target:	ATG13
Alternative Name:	ATG13 (ATG13 Products)

Target Details

Background:	Autophagy factor required for autophagosome formation. Target of the TOR kinase signaling pathway that regulates autophagy through the control of the phosphorylation status of ATG13 and ULK1, and the regulation of the ATG13-ULK1-RB1CC1 complex.
Molecular Weight:	56572
NCBI Accession:	NP_001136145 , NP_001192048 , NP_001192049 , NP_001192050 , NP_001192051 , NP_055556
UniProt:	O75143
Pathways:	PI3K-Akt Signaling , Autophagy

Application Details

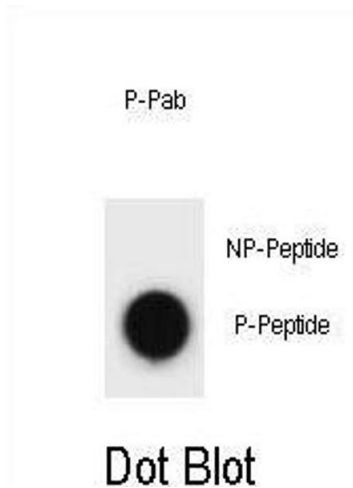
Application Notes:	DB: 1:500
Restrictions:	For Research Use only

Handling

Format:	Liquid
Buffer:	Purified polyclonal antibody supplied in PBS with 0.09 % (W/V) sodium azide.
Preservative:	Sodium azide
Precaution of Use:	This product contains Sodium azide: a POISONOUS AND HAZARDOUS SUBSTANCE which should be handled by trained staff only.
Storage:	4 °C, -20 °C
Expiry Date:	6 months

Publications

Product cited in:	Si, Ali, Latip, Fauzi, Budin, Zainalabidin: "Roselle is cardioprotective in diet-induced obesity rat model with myocardial infarction." in: Life sciences , Vol. 191, pp. 157-165, (2017) (PubMed).
	Yida, Imam, Ismail, Ooi, Sarega, Azmi, Ismail, Chan, Hou, Yusuf: "Edible Bird's Nest Prevents High Fat Diet-Induced Insulin Resistance in Rats." in: Journal of diabetes research , Vol. 2015, pp. 760535, (2016) (PubMed).



Dot Blot

Image 1. Dot blot analysis of ATG13 Antibody (Phospho) Phospho-specific Pab (ABIN1881081 and ABIN2839945) on nitrocellulose membrane. 50 ng of Phospho-peptide or Non Phospho-peptide per dot were adsorbed. Antibody working concentrations are 0.6 µg per ml.