

Datasheet for ABIN1881103  
**anti-BCAP31 antibody (AA 120-147)**[Go to Product page](#)

2 Images

2 Publications

## Overview

Quantity:	400 µL
Target:	BCAP31
Binding Specificity:	AA 120-147
Reactivity:	Human
Host:	Rabbit
Clonality:	Polyclonal
Conjugate:	This BCAP31 antibody is un-conjugated
Application:	Western Blotting (WB), Immunohistochemistry (Paraffin-embedded Sections) (IHC (p))

## Product Details

Immunogen:	This BCAP31 antibody is generated from rabbits immunized with a KLH conjugated synthetic peptide between 120-147 amino acids from the Central region of human BCAP31.
Isotype:	Ig Fraction
Purification:	This antibody is purified through a protein A column, followed by peptide affinity purification.

## Target Details

Target:	BCAP31
Alternative Name:	BCAP31 ( <a href="#">BCAP31 Products</a> )
Background:	May play a role in anterograde transport of membrane proteins from the endoplasmic reticulum to the Golgi. May be involved in CASP8-mediated apoptosis.

## Target Details

Molecular Weight:	27992
NCBI Accession:	<a href="#">NP_001132913</a> , <a href="#">NP_001132929</a> , <a href="#">NP_001243376</a> , <a href="#">NP_005736</a>
UniProt:	<a href="#">P51572</a>
Pathways:	<a href="#">Positive Regulation of Endopeptidase Activity</a>

## Application Details

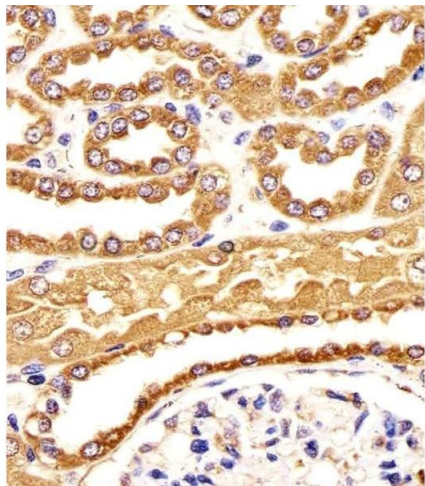
Application Notes:	WB: 1:1000. IHC-P: 1:25
Restrictions:	For Research Use only

## Handling

Format:	Liquid
Buffer:	Purified polyclonal antibody supplied in PBS with 0.09 % (W/V) sodium azide.
Preservative:	Sodium azide
Precaution of Use:	This product contains Sodium azide: a POISONOUS AND HAZARDOUS SUBSTANCE which should be handled by trained staff only.
Storage:	4 °C, -20 °C
Expiry Date:	6 months

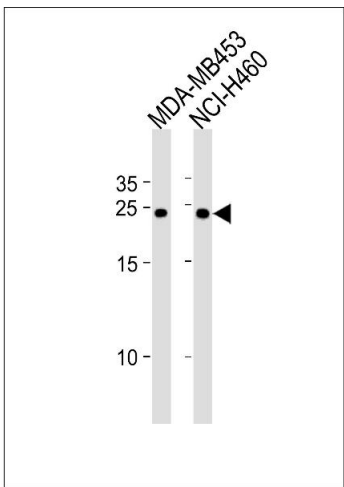
## Publications

Product cited in:	Maeda, Inoguchi, Takei, Sawada, Sasaki, Fujii, Kobayashi, Urata, Nishiyama, Takayanagi: "Inhibition of chymase protects against diabetes-induced oxidative stress and renal dysfunction in hamsters." in: <b>American journal of physiology. Renal physiology</b> , Vol. 299, Issue 6, pp. F1328-38, (2010) ( <a href="#">PubMed</a> ).
-------------------	---



#### Immunohistochemistry (Paraffin-embedded Sections)

**Image 1.** Immunohistochemical analysis of paraffin-embedded H. kidney section using BC Antibody (Center) C. C was diluted at 1:25 dilution. A undiluted biotinylated goat polyvalent antibody was used as the secondary, followed by DAB staining.



#### Western Blotting

**Image 2.** BC Antibody (Center) (ABIN1881103 and ABIN2843444) western blot analysis in MDA-M, NCI- cell line lysates (35 µg/lane). This demonstrates the BC antibody detected the BC protein (arrow).