



[Go to Product page](#)

Datasheet for ABIN1881117
anti-BMP8A antibody (C-Term)

1 Image

1 Publication

Overview

Quantity:	400 µL
Target:	BMP8A
Binding Specificity:	AA 271-298, C-Term
Reactivity:	Human
Host:	Rabbit
Clonality:	Polyclonal
Conjugate:	This BMP8A antibody is un-conjugated
Application:	Western Blotting (WB)

Product Details

Immunogen:	This BMP8A antibody is generated from rabbits immunized with a KLH conjugated synthetic peptide between 271-298 amino acids from the C-terminal region of human BMP8A.
Clone:	RB32225
Isotype:	Ig Fraction
Purification:	This antibody is purified through a protein A column, followed by peptide affinity purification.

Target Details

Target:	BMP8A
Alternative Name:	BMP8A (BMP8A Products)
Background:	Induces cartilage and bone formation. May be the osteoinductive factor responsible for the

Target Details

phenomenon of epithelial osteogenesis. Plays a role in calcium regulation and bone homeostasis (By similarity).

Molecular Weight: 44798

NCBI Accession: [NP_861525](#)

UniProt: [Q7Z5Y6](#)

Pathways: [Negative Regulation of Hormone Secretion](#)

Application Details

Application Notes: WB: 1:1000

Restrictions: For Research Use only

Handling

Format: Liquid

Buffer: Purified polyclonal antibody supplied in PBS with 0.09 % (W/V) sodium azide.

Preservative: Sodium azide

Precaution of Use: This product contains Sodium azide: a POISONOUS AND HAZARDOUS SUBSTANCE which should be handled by trained staff only.

Storage: 4 °C,-20 °C

Expiry Date: 6 months

Publications

Product cited in: Mehta, Vazquez, Kulkarni, Kerrigan, Atwal, Metsugi, Toppmeyer, Levine, Hirshfield: "Polymorphic variants in TSC1 and TSC2 and their association with breast cancer phenotypes." in: **Breast cancer research and treatment**, Vol. 125, Issue 3, pp. 861-8, (2011) ([PubMed](#)).

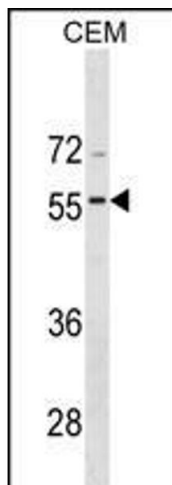
Hoogeveen-Westerveld, Exalto, Maat-Kievit, van den Ouweland, Halley, Nellist: "Analysis of TSC1 truncations defines regions involved in TSC1 stability, aggregation and interaction." in: **Biochimica et biophysica acta**, Vol. 1802, Issue 9, pp. 774-81, (2010) ([PubMed](#)).

Mieulet, Lamb: "Tuberous sclerosis complex: linking cancer to metabolism." in: **Trends in molecular medicine**, Vol. 16, Issue 7, pp. 329-35, (2010) ([PubMed](#)).

Guo, Ying, Zhang, Yuan, Qian, Wang, Yang, He: "Tandem affinity purification and identification of the human TSC1 protein complex." in: **Acta biochimica et biophysica Sinica**, Vol. 42, Issue 4, pp. 266-73, (2010) ([PubMed](#)).

Liu, Wu, Chen, Ter-Minassian, Asomaning, Zhai, Wang, Su, Heist, Kulke, Lin, Liu, Christiani: "A Large-scale genetic association study of esophageal adenocarcinoma risk." in: **Carcinogenesis**, Vol. 31, Issue 7, pp. 1259-63, (2010) ([PubMed](#)).

Images



Western Blotting

Image 1. BA Antibody (C-term) (ABIN1881117 and ABIN2838765) western blot analysis in CEM cell line lysates (35 µg/lane). This demonstrates the BA antibody detected the BA protein (arrow).