

Datasheet for ABIN1881119
anti-BRAP antibody (N-Term)[Go to Product page](#)

1 Image

5 Publications

Overview

Quantity:	400 µL
Target:	BRAP
Binding Specificity:	AA 66-95, N-Term
Reactivity:	Human
Host:	Rabbit
Clonality:	Polyclonal
Conjugate:	This BRAP antibody is un-conjugated
Application:	Western Blotting (WB)

Product Details

Immunogen:	This BRAP antibody is generated from rabbits immunized with a KLH conjugated synthetic peptide between 66-95 amino acids from the N-terminal region of human BRAP.
Clone:	RB41572
Isotype:	Ig Fraction
Purification:	This antibody is purified through a protein A column, followed by peptide affinity purification.

Target Details

Target:	BRAP
Alternative Name:	BRAP (BRAP Products)
Background:	The protein encoded by this gene was identified by its ability to bind to the nuclear localization

Target Details

signal of BRCA1 and other proteins. It is a cytoplasmic protein which may regulate nuclear targeting by retaining proteins with a nuclear localization signal in the cytoplasm.

Molecular Weight: 67305

NCBI Accession: [NP_006759](#)

UniProt: [Q7Z569](#)

Application Details

Application Notes: WB: 1:1000

Restrictions: For Research Use only

Handling

Format: Liquid

Buffer: Purified polyclonal antibody supplied in PBS with 0.09 % (W/V) sodium azide.

Preservative: Sodium azide

Precaution of Use: This product contains Sodium azide: a POISONOUS AND HAZARDOUS SUBSTANCE which should be handled by trained staff only.

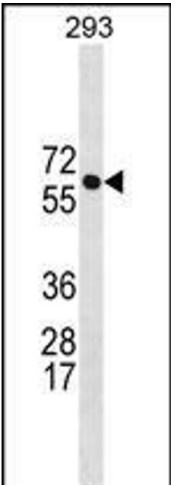
Storage: 4 °C, -20 °C

Expiry Date: 6 months

Publications

Product cited in: Si, Ali, Latip, Fauzi, Budin, Zainalabidin: "Roselle is cardioprotective in diet-induced obesity rat model with myocardial infarction." in: **Life sciences**, Vol. 191, pp. 157-165, (2017) ([PubMed](#)).

Yida, Imam, Ismail, Ooi, Sarega, Azmi, Ismail, Chan, Hou, Yusuf: "Edible Bird's Nest Prevents High Fat Diet-Induced Insulin Resistance in Rats." in: **Journal of diabetes research**, Vol. 2015, pp. 760535, (2016) ([PubMed](#)).



Western Blotting

Image 1. BR Antibody (N-term) 19664a western blot analysis in 293 cell line lysates (35 µg/lane). This demonstrates the BR antibody detected the BR protein (arrow).