



Datasheet for ABIN1881123  
**anti-C11orf24 antibody (N-Term)**



[Go to Product page](#)

1 Image

Overview

Quantity:	400 µL
Target:	C11orf24
Binding Specificity:	AA 63-92, N-Term
Reactivity:	Human
Host:	Rabbit
Clonality:	Polyclonal
Conjugate:	This C11orf24 antibody is un-conjugated
Application:	Western Blotting (WB)

Product Details

Immunogen:	This C11orf24 antibody is generated from rabbits immunized with a KLH conjugated synthetic peptide between 63-92 amino acids from the N-terminal region of human C11orf24.
Clone:	RB33447
Isotype:	Ig Fraction
Purification:	This antibody is purified through a protein A column, followed by peptide affinity purification.

Target Details

Target:	C11orf24
Alternative Name:	C11orf24 ( <a href="#">C11orf24 Products</a> )
Background:	The function of this protein remains unknown.

## Target Details

NCBI Accession: [NP\\_071733](#)

UniProt: [Q96F05](#)

## Application Details

Application Notes: WB: 1:1000

Restrictions: For Research Use only

## Handling

Format: Liquid

Buffer: Purified polyclonal antibody supplied in PBS with 0.09 % (W/V) sodium azide.

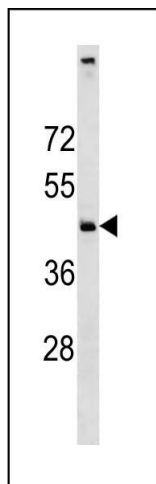
Preservative: Sodium azide

Precaution of Use: This product contains Sodium azide: a POISONOUS AND HAZARDOUS SUBSTANCE which should be handled by trained staff only.

Storage: 4 °C, -20 °C

Expiry Date: 6 months

## Images



### Western Blotting

**Image 1.** C11orf24 Antibody (N-term) (ABIN1881123 and ABIN2843210) western blot analysis in SK-BR-3 cell line lysates (35 µg/lane). This demonstrates the C11orf24 antibody detected the C11orf24 protein (arrow).