



[Go to Product page](#)

Datasheet for ABIN1881125

anti-C16ORF71 antibody (AA 320-348)

1 Image

Overview

Quantity:	400 µL
Target:	C16ORF71
Binding Specificity:	AA 320-348
Reactivity:	Human
Host:	Rabbit
Clonality:	Polyclonal
Conjugate:	This C16ORF71 antibody is un-conjugated
Application:	Western Blotting (WB)

Product Details

Immunogen:	This C16orf71 antibody is generated from rabbits immunized with a KLH conjugated synthetic peptide between 320-348 amino acids from the Central region of human C16orf71.
Clone:	RB43968
Isotype:	Ig Fraction
Purification:	This antibody is purified through a protein A column, followed by peptide affinity purification.

Target Details

Target:	C16ORF71
Alternative Name:	C16orf71 (C16ORF71 Products)
Background:	The exact function of C16orf71 remains unknown.

Target Details

Molecular Weight: 55682

NCBI Accession: [NP_631909](#)

UniProt: [Q8IYS4](#)

Application Details

Application Notes: WB: 1:1000

Restrictions: For Research Use only

Handling

Format: Liquid

Buffer: Purified polyclonal antibody supplied in PBS with 0.09 % (W/V) sodium azide.

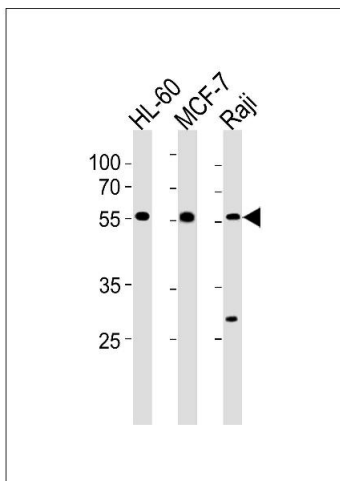
Preservative: Sodium azide

Precaution of Use: This product contains Sodium azide: a POISONOUS AND HAZARDOUS SUBSTANCE which should be handled by trained staff only.

Storage: 4 °C,-20 °C

Expiry Date: 6 months

Images



Western Blotting

Image 1. C16orf71 Antibody (Center) (ABIN1881125 and ABIN2843365) western blot analysis in HL-60, MCF-7 and Raji cell line lysates (35 µg/lane). This demonstrates the C16orf71 antibody detected the C16orf71 protein (arrow).