



[Go to Product page](#)

Datasheet for ABIN1881126

anti-C1GALT1 antibody (AA 115-144)

[2 Images](#)

[3 Publications](#)

Overview

Quantity:	400 µL
Target:	C1GALT1
Binding Specificity:	AA 115-144
Reactivity:	Human, Mouse
Host:	Rabbit
Clonality:	Polyclonal
Application:	Western Blotting (WB), Immunohistochemistry (Paraffin-embedded Sections) (IHC (p))

Product Details

Immunogen:	This C1GALT1 antibody is generated from rabbits immunized with a KLH conjugated synthetic peptide between 115-144 amino acids from the Central region of human C1GALT1.
Clone:	RB43864
Isotype:	IgG
Purification:	This antibody is purified through a protein A column, followed by peptide affinity purification.

Target Details

Target:	C1GALT1
Alternative Name:	C1GALT1 (C1GALT1 Products)
Background:	Glycosyltransferase that generates the core 1 O-glycan Gal-beta1-3GalNAc-alpha1-Ser/Thr (T antigen), which is a precursor for many extended O-glycans in glycoproteins. Plays a central role in many processes, such as angiogenesis, thrombopoiesis and kidney homeostasis

Target Details

development.

Molecular Weight: 42203

NCBI Accession: [NP_064541](#)

UniProt: [Q9NS00](#)

Application Details

Application Notes: WB: 1:1000. IHC-P: 1:100

Restrictions: For Research Use only

Handling

Format: Liquid

Buffer: Purified polyclonal antibody supplied in PBS with 0.09 % (W/V) sodium azide.

Preservative: Sodium azide

Precaution of Use: This product contains Sodium azide: a POISONOUS AND HAZARDOUS SUBSTANCE which should be handled by trained staff only.

Storage: 4 °C, -20 °C

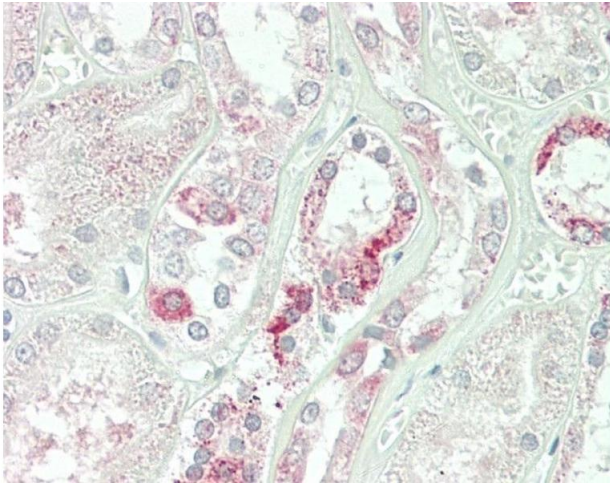
Expiry Date: 6 months

Publications

Product cited in: Scherer, Cheung, MacDonald, Osborne, Nakabayashi, Herbrick, Carson, Parker-Katirae, Skaug, Khaja, Zhang, Hudek, Li, Haddad, Duggan, Fernandez, Kanematsu, Gentles, Christopoulos, Choufani, Kwasnicka et al.: "Human chromosome 7: DNA sequence and biology. ..." in: **Science (New York, N.Y.)**, Vol. 300, Issue 5620, pp. 767-72, (2003) ([PubMed](#)).

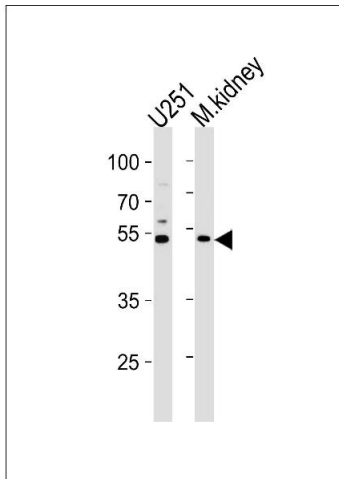
Ju, Brewer, DSouza, Cummings, Canfield: "Cloning and expression of human core 1 beta1,3-galactosyltransferase." in: **The Journal of biological chemistry**, Vol. 277, Issue 1, pp. 178-86, (2002) ([PubMed](#)).

Ju, Cummings: "A unique molecular chaperone Cosmc required for activity of the mammalian core 1 beta 3-galactosyltransferase." in: **Proceedings of the National Academy of Sciences of the United States of America**, Vol. 99, Issue 26, pp. 16613-8, (2002) ([PubMed](#)).



Immunohistochemistry (Paraffin-embedded Sections)

Image 1. Formalin-fixed and paraffin-embedded H.kidney tissue reacted with C1GALT1 Antibody (Center) (ABIN1881126 and ABIN2843369).



Western Blotting

Image 2. C1GALT1 Antibody (Center) (ABIN1881126 and ABIN2843369) western blot analysis in cell line and mouse kidney lysates (35 µg/lane). This demonstrates the C1GALT1 antibody detected the C1GALT1 protein (arrow).