

Datasheet for ABIN1881130
anti-C8B antibody (C-Term)[Go to Product page](#)**1** Image**3** Publications

Overview

Quantity:	400 µL
Target:	C8B
Binding Specificity:	AA 393-422, C-Term
Reactivity:	Human
Host:	Rabbit
Clonality:	Polyclonal
Conjugate:	This C8B antibody is un-conjugated
Application:	Western Blotting (WB)

Product Details

Immunogen:	This C8B antibody is generated from rabbits immunized with a KLH conjugated synthetic peptide between 393-422 amino acids from the C-terminal region of human C8B.
Clone:	RB30678
Isotype:	Ig Fraction
Purification:	This antibody is purified through a protein A column, followed by peptide affinity purification.

Target Details

Target:	C8B
Alternative Name:	C8B (C8B Products)
Background:	C8 beta is one of the three subunits that comprise the component 8 (C8) of the complement

Target Details

system. C8 participates in the formation of Membrane Attack Complex that results in the lysis of cells. Patients with C8B deficiency are prone to bacteria infection.

Molecular Weight: 67047

NCBI Accession: [NP_000057](#)

UniProt: [P07358](#)

Pathways: [Complement System](#)

Application Details

Application Notes: WB: 1:1000

Restrictions: For Research Use only

Handling

Format: Liquid

Buffer: Purified polyclonal antibody supplied in PBS with 0.09 % (W/V) sodium azide.

Preservative: Sodium azide

Precaution of Use: This product contains Sodium azide: a POISONOUS AND HAZARDOUS SUBSTANCE which should be handled by trained staff only.

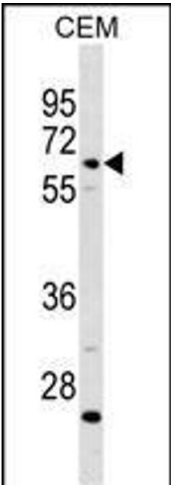
Storage: 4 °C,-20 °C

Expiry Date: 6 months

Publications

Product cited in: Si, Ali, Latip, Fauzi, Budin, Zainalabidin: "Roselle is cardioprotective in diet-induced obesity rat model with myocardial infarction." in: **Life sciences**, Vol. 191, pp. 157-165, (2017) ([PubMed](#)).

Yida, Imam, Ismail, Ooi, Sarega, Azmi, Ismail, Chan, Hou, Yusuf: "Edible Bird's Nest Prevents High Fat Diet-Induced Insulin Resistance in Rats." in: **Journal of diabetes research**, Vol. 2015, pp. 760535, (2016) ([PubMed](#)).



Western Blotting

Image 1. C8B Antibody (C-term) (ABIN1881130 and ABIN2838764) western blot analysis in CEM cell line lysates (35 µg/lane). This demonstrates the C8B antibody detected the C8B protein (arrow).