

Datasheet for ABIN1881133  
**anti-CALB1 antibody (AA 90-116)**[Go to Product page](#)

2 Images

2 Publications

## Overview

Quantity:	400 µL
Target:	CALB1
Binding Specificity:	AA 90-116
Reactivity:	Human, Rat
Host:	Rabbit
Clonality:	Polyclonal
Conjugate:	This CALB1 antibody is un-conjugated
Application:	Western Blotting (WB), Immunohistochemistry (Paraffin-embedded Sections) (IHC (p))

## Product Details

Immunogen:	This CALB1 antibody is generated from rabbits immunized with a KLH conjugated synthetic peptide between 90-116 amino acids from the Central region of human CALB1.
Isotype:	Ig Fraction
Predicted Reactivity:	B, M
Purification:	This antibody is purified through a protein A column, followed by peptide affinity purification.

## Target Details

Target:	CALB1
Alternative Name:	CALB1 ( <a href="#">CALB1 Products</a> )
Background:	Buffers cytosolic calcium. May stimulate a membrane Ca(2+)-ATPase and a 3',5'-cyclic

## Target Details

	nucleotide phosphodiesterase.
Molecular Weight:	30025
NCBI Accession:	<a href="#">NP_004920</a>
UniProt:	<a href="#">P05937</a>

## Application Details

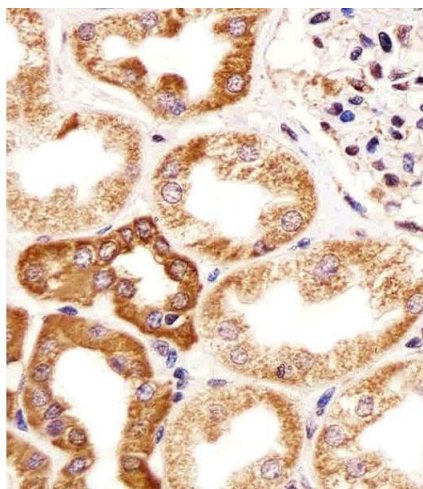
Application Notes:	WB: 1:1000. IHC-P: 1:25
Restrictions:	For Research Use only

## Handling

Format:	Liquid
Buffer:	Purified polyclonal antibody supplied in PBS with 0.09 % (W/V) sodium azide.
Preservative:	Sodium azide
Precaution of Use:	This product contains Sodium azide: a POISONOUS AND HAZARDOUS SUBSTANCE which should be handled by trained staff only.
Storage:	4 °C,-20 °C
Expiry Date:	6 months

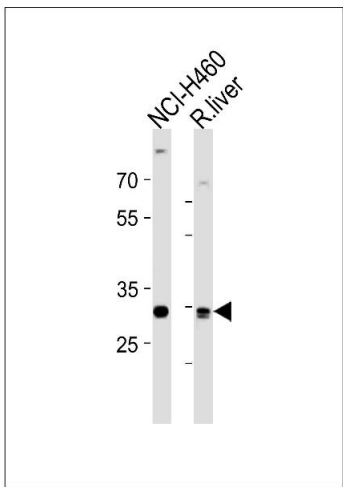
## Publications

Product cited in:	Maeda, Inoguchi, Takei, Sawada, Sasaki, Fujii, Kobayashi, Urata, Nishiyama, Takayanagi: "Inhibition of chymase protects against diabetes-induced oxidative stress and renal dysfunction in hamsters." in: <b>American journal of physiology. Renal physiology</b> , Vol. 299, Issue 6, pp. F1328-38, (2010) ( <a href="#">PubMed</a> ).
-------------------	---



#### Immunohistochemistry (Paraffin-embedded Sections)

**Image 1.** Immunohistochemical analysis of paraffin-embedded H. kidney section using CALB1 Antibody (Center) C. C was diluted at 1:25 dilution. A undiluted biotinylated goat polyvalent antibody was used as the secondary, followed by DAB staining.



#### Western Blotting

**Image 2.** CALB1 Antibody (Center) (ABIN1881133 and ABIN2843433) western blot analysis in NCI- cell line and rat liver tissue lysates (35 µg/lane). This demonstrates the CALB1 antibody detected the CALB1 protein (arrow).