



[Go to Product page](#)

Datasheet for ABIN1881136
anti-CARD6 antibody (AA 755-787)

5 Images

1 Publication

Overview

Quantity:	400 µL
Target:	CARD6
Binding Specificity:	AA 755-787
Reactivity:	Human
Host:	Rabbit
Clonality:	Polyclonal
Conjugate:	This CARD6 antibody is un-conjugated
Application:	Western Blotting (WB), Immunohistochemistry (Paraffin-embedded Sections) (IHC (p))

Product Details

Immunogen:	This CARD6 antibody is generated from rabbits immunized with a KLH conjugated synthetic peptide selected from the Center region of human CARD6.
Clone:	RB23118
Isotype:	Ig Fraction
Purification:	This antibody is purified through a protein A column, followed by peptide affinity purification.

Target Details

Target:	CARD6
Alternative Name:	CARD6 (CARD6 Products)
Background:	CARD6 is a protein that contains a caspase recruitment domain (CARD), an antiparallel six-

Target Details

helical bundle that mediates homotypic protein-protein interactions. The encoded protein is a microtubule-associated protein that has been shown to interact with receptor-interacting protein kinases and positively modulate signal transduction pathways converging on activation of the inducible transcription factor NF- κ B.

Molecular Weight: 116468

NCBI Accession: [NP_115976](#)

UniProt: [Q9BX69](#)

Application Details

Application Notes: WB: 1:1000. WB: 1:1000. WB: 1:1000. IHC-P: 1:25. IHC-P: 1:25

Restrictions: For Research Use only

Handling

Format: Liquid

Buffer: Purified polyclonal antibody supplied in PBS with 0.09 % (W/V) sodium azide.

Preservative: Sodium azide

Precaution of Use: This product contains Sodium azide: a POISONOUS AND HAZARDOUS SUBSTANCE which should be handled by trained staff only.

Storage: 4 °C,-20 °C

Expiry Date: 6 months

Publications

Product cited in: Hyrskyluoto, Bruelle, Lundh, Do, Kivinen, Rappou, Reijonen, Waltimo, Petersén, Lindholm, Korhonen: "Ubiquitin-specific protease-14 reduces cellular aggregates and protects against mutant huntingtin-induced cell degeneration: involvement of the proteasome and ER stress-activated kinase IRE1?." in: **Human molecular genetics**, Vol. 23, Issue 22, pp. 5928-39, (2014) ([PubMed](#)).

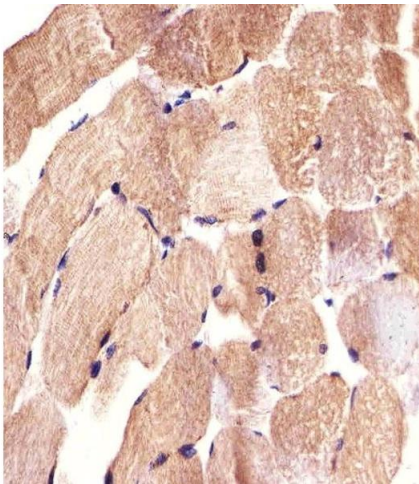
Davila, Froeling, Tan, Bonnard, Boland, Snippe, Hibberd, Seielstad: "New genetic associations detected in a host response study to hepatitis B vaccine." in: **Genes and immunity**, Vol. 11, Issue 3, pp. 232-8, (2010) ([PubMed](#)).

Chen, Qin, Li, Walters, Wilson, Mei, Wilson: "The proteasome-associated deubiquitinating enzyme Usp14 is essential for the maintenance of synaptic ubiquitin levels and the development of neuromuscular junctions." in: **The Journal of neuroscience : the official journal of the Society for Neuroscience**, Vol. 29, Issue 35, pp. 10909-19, (2009) ([PubMed](#)).

Nagai, Kadowaki, Maruyama, Takeda, Nishitoh, Ichijo: "USP14 inhibits ER-associated degradation via interaction with IRE1alpha." in: **Biochemical and biophysical research communications**, Vol. 379, Issue 4, pp. 995-1000, (2009) ([PubMed](#)).

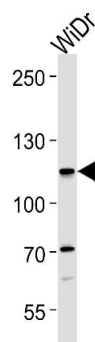
Mines, Goodwin, Limbird, Cui, Fan: "Deubiquitination of CXCR4 by USP14 is critical for both CXCL12-induced CXCR4 degradation and chemotaxis but not ERK activation." in: **The Journal of biological chemistry**, Vol. 284, Issue 9, pp. 5742-52, (2009) ([PubMed](#)).

Images



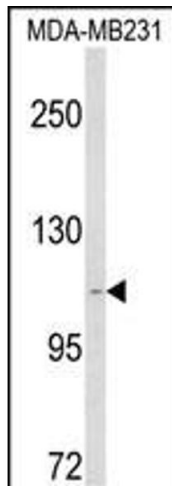
Immunohistochemistry (Paraffin-embedded Sections)

Image 1. Immunohistochemical analysis of paraffin-embedded H. skeletal muscle section using CARD6 Antibody (Center) (ABIN1881136 and ABIN2842626). (ABIN1881136 and ABIN2842626) was diluted at 1:25 dilution. A undiluted biotinylated goat polyvalent antibody was used as the secondary, followed by DAB staining.



Western Blotting

Image 2. CARD6 Antibody (Center) (ABIN1881136 and ABIN2842626) western blot analysis in WiDr cell line lysates (35 µg/lane). This demonstrates the CARD6 antibody detected the CARD6 protein (arrow).



Western Blotting

Image 3. Western blot analysis of CARD6 Antibody (Center) (ABIN1881136 and ABIN2842626) in MDA-M cell line lysates (35 µg/lane). CARD6 (arrow) was detected using the purified Pab.

Please check the [product details page](#) for more images. Overall 5 images are available for ABIN1881136.