



[Go to Product page](#)

Datasheet for ABIN1881142
anti-CBWD6 antibody (AA 193-221)

1 Image

Overview

Quantity:	400 µL
Target:	CBWD6
Binding Specificity:	AA 193-221
Reactivity:	Human
Host:	Rabbit
Clonality:	Polyclonal
Conjugate:	This CBWD6 antibody is un-conjugated
Application:	Western Blotting (WB)

Product Details

Immunogen:	This CBWD6 antibody is generated from rabbits immunized with a KLH conjugated synthetic peptide between 193-221 amino acids from the Central region of human CBWD6.
Clone:	RB40882
Isotype:	Ig Fraction
Purification:	This antibody is purified through a protein A column, followed by peptide affinity purification.

Target Details

Target:	CBWD6
Alternative Name:	CBWD6 (CBWD6 Products)
Background:	The function of this protein is unknown.

Target Details

Molecular Weight: 43964

NCBI Accession: [NP_001078926](#)

UniProt: [Q4V339](#)

Application Details

Application Notes: WB: 1:1000

Restrictions: For Research Use only

Handling

Format: Liquid

Buffer: Purified polyclonal antibody supplied in PBS with 0.09 % (W/V) sodium azide.

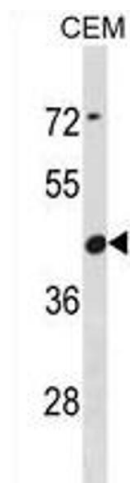
Preservative: Sodium azide

Precaution of Use: This product contains Sodium azide: a POISONOUS AND HAZARDOUS SUBSTANCE which should be handled by trained staff only.

Storage: 4 °C,-20 °C

Expiry Date: 6 months

Images



Western Blotting

Image 1. CBWD6 Antibody (Center) (ABIN1881142 and ABIN2838788) western blot analysis in CEM cell line lysates (35 µg/lane). This demonstrates the CBWD6 antibody detected the CBWD6 protein (arrow).