

Datasheet for ABIN1881143
anti-CCDC14 antibody (N-Term)



[Go to Product page](#)

1 Image

Overview

Quantity:	400 µL
Target:	CCDC14
Binding Specificity:	AA 377-406, N-Term
Reactivity:	Human
Host:	Rabbit
Clonality:	Polyclonal
Conjugate:	This CCDC14 antibody is un-conjugated
Application:	Western Blotting (WB)

Product Details

Immunogen:	This CCD14 antibody is generated from rabbits immunized with a KLH conjugated synthetic peptide between 377-406 amino acids from the N-terminal region of human CCD14.
Clone:	RB43717
Isotype:	Ig Fraction
Purification:	This antibody is purified through a protein A column, followed by peptide affinity purification.

Target Details

Target:	CCDC14
Abstract:	CCDC14 Products
Background:	The function of this protein remains unknown.

Target Details

Molecular Weight: 106302

NCBI Accession: [NP_073594](#)

UniProt: [Q49A88](#)

Application Details

Application Notes: WB: 1:1000

Restrictions: For Research Use only

Handling

Format: Liquid

Buffer: Purified polyclonal antibody supplied in PBS with 0.09 % (W/V) sodium azide.

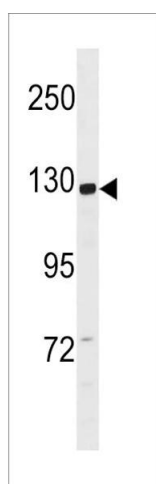
Preservative: Sodium azide

Precaution of Use: This product contains Sodium azide: a POISONOUS AND HAZARDOUS SUBSTANCE which should be handled by trained staff only.

Storage: 4 °C,-20 °C

Expiry Date: 6 months

Images



Western Blotting

Image 1. CCD14 Antibody (N-term) (ABIN1881143 and ABIN2843338) western blot analysis in SK-BR-3 cell line lysates (35 µg/lane). This demonstrates the CCD14 antibody detected the CCD14 protein (arrow).