



[Go to Product page](#)

Datasheet for ABIN1881145  
**anti-CCDC155 antibody (AA 159-185)**

1 Image

### Overview

Quantity:	400 µL
Target:	CCDC155
Binding Specificity:	AA 159-185
Reactivity:	Human
Host:	Rabbit
Clonality:	Polyclonal
Conjugate:	This CCDC155 antibody is un-conjugated
Application:	Western Blotting (WB)

### Product Details

Immunogen:	This CCDC155 antibody is generated from rabbits immunized with a KLH conjugated synthetic peptide between 159-185 amino acids from the Central region of human CCDC155.
Clone:	RB42894
Isotype:	Ig Fraction
Purification:	This antibody is purified through a protein A column, followed by peptide affinity purification.

### Target Details

Target:	CCDC155
Alternative Name:	CCDC155 ( <a href="#">CCDC155 Products</a> )
Background:	The function of this protein remains unknown.

## Target Details

Molecular Weight: 62783

NCBI Accession: [NP\\_653289](#)

UniProt: [Q8N6L0](#)

## Application Details

Application Notes: WB: 1:1000

Restrictions: For Research Use only

## Handling

Format: Liquid

Buffer: Purified polyclonal antibody supplied in PBS with 0.09 % (W/V) sodium azide.

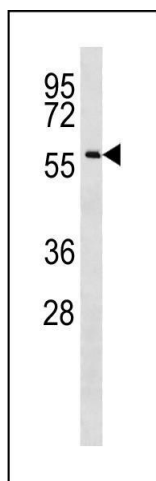
Preservative: Sodium azide

Precaution of Use: This product contains Sodium azide: a POISONOUS AND HAZARDOUS SUBSTANCE which should be handled by trained staff only.

Storage: 4 °C,-20 °C

Expiry Date: 6 months

## Images



### Western Blotting

**Image 1.** CCD Antibody (Center) (ABIN1881145 and ABIN2843297) western blot analysis in NCI- cell line lysates (35 µg/lane). This demonstrates the CCD antibody detected the CCD protein (arrow).