



[Go to Product page](#)

Datasheet for ABIN1881147
anti-CCDC83 antibody (N-Term)

1 Image

Overview

Quantity:	400 µL
Target:	CCDC83
Binding Specificity:	AA 1-30, N-Term
Reactivity:	Human
Host:	Rabbit
Clonality:	Polyclonal
Conjugate:	This CCDC83 antibody is un-conjugated
Application:	Western Blotting (WB)

Product Details

Immunogen:	This CCDC83 antibody is generated from rabbits immunized with a KLH conjugated synthetic peptide between 1-30 amino acids from the N-terminal region of human CCDC83.
Clone:	RB42895
Isotype:	Ig Fraction
Predicted Reactivity:	Pr
Purification:	This antibody is purified through a protein A column, followed by peptide affinity purification.

Target Details

Target:	CCDC83
Alternative Name:	CCDC83 (CCDC83 Products)

Target Details

Background:	There are three named isoforms.
Molecular Weight:	48851
NCBI Accession:	NP_775827
UniProt:	Q8IWF9

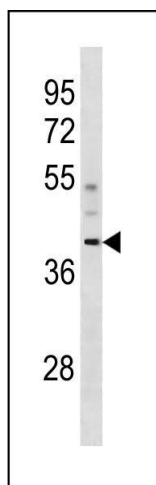
Application Details

Application Notes:	WB: 1:1000
Restrictions:	For Research Use only

Handling

Format:	Liquid
Buffer:	Purified polyclonal antibody supplied in PBS with 0.09 % (W/V) sodium azide.
Preservative:	Sodium azide
Precaution of Use:	This product contains Sodium azide: a POISONOUS AND HAZARDOUS SUBSTANCE which should be handled by trained staff only.
Storage:	4 °C, -20 °C
Expiry Date:	6 months

Images



Western Blotting

Image 1. CCDC83 Antibody (N-term) (ABIN1881147 and ABIN2843298) western blot analysis in human placenta tissue lysates (35 µg/lane). This demonstrates the CCDC83 antibody detected the CCDC83 protein (arrow).