

Datasheet for ABIN1881168
anti-Cyclin B3 antibody (pSer1063)[Go to Product page](#)

1 Image

Overview

Quantity:	400 µL
Target:	Cyclin B3 (CCNB3)
Binding Specificity:	pSer1063
Reactivity:	Mouse
Host:	Rabbit
Clonality:	Polyclonal
Conjugate:	This Cyclin B3 antibody is un-conjugated
Application:	Dot Blot (DB)

Product Details

Immunogen:	This mouse CCNB3 Antibody is generated from rabbits immunized with a KLH conjugated synthetic phosphopeptide corresponding to amino acid residues surrounding S1063 of mouse CCNB3.
Clone:	RB42087
Isotype:	Ig Fraction
Purification:	This antibody is purified through a protein A column, followed by peptide affinity purification.

Target Details

Target:	Cyclin B3 (CCNB3)
Alternative Name:	CCNB3 (CCNB3 Products)

Target Details

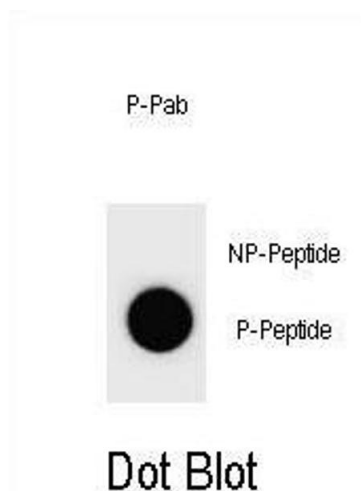
Background:	Cyclins are positive regulatory subunits of the cyclin-dependent kinases (CDKs), and thereby play an essential role in the control of the cell cycle, notably via their destruction during cell division. Its tissue specificity suggest that it may be required during early meiotic prophase I (By similarity).
Molecular Weight:	158969
UniProt:	Q810T2
Pathways:	Cell Division Cycle, Chromatin Binding

Application Details

Application Notes:	DB: 1:500
Restrictions:	For Research Use only

Handling

Format:	Liquid
Buffer:	Purified polyclonal antibody supplied in PBS with 0.09 % (W/V) sodium azide.
Preservative:	Sodium azide
Precaution of Use:	This product contains Sodium azide: a POISONOUS AND HAZARDOUS SUBSTANCE which should be handled by trained staff only.
Storage:	4 °C,-20 °C
Expiry Date:	6 months



Dot Blot

Image 1. Dot blot analysis of Mouse CCNB3 Antibody (Phospho) Phospho-specific Pab (ABIN1881168 and ABIN2839968) on nitrocellulose membrane. 50 ng of Phospho-peptide or Non Phospho-peptide per dot were adsorbed. Antibody working concentrations are 0.6 µg per ml.