

Datasheet for ABIN1881169
anti-Cyclin B3 antibody (pSer277)[Go to Product page](#)

1 Image

Overview

Quantity:	400 µL
Target:	Cyclin B3 (CCNB3)
Binding Specificity:	pSer277
Reactivity:	Rat
Host:	Rabbit
Clonality:	Polyclonal
Conjugate:	This Cyclin B3 antibody is un-conjugated
Application:	Dot Blot (DB)

Product Details

Immunogen:	This rat CCNB3 Antibody is generated from rabbits immunized with a KLH conjugated synthetic phosphopeptide corresponding to amino acid residues surrounding S277 of rat CCNB3.
Clone:	RB42135
Isotype:	Ig Fraction
Purification:	This antibody is purified through a protein A column, followed by peptide affinity purification.

Target Details

Target:	Cyclin B3 (CCNB3)
Alternative Name:	CCNB3 (CCNB3 Products)
Background:	Cyclins are positive regulatory subunits of the cyclin-dependent kinases (CDKs), and thereby

Target Details

play an essential role in the control of the cell cycle, notably via their destruction during cell division. Its tissue specificity suggest that it may be required during early meiotic prophase I (By similarity).

Molecular Weight: 159338

UniProt: [F1LVT0](#)

Pathways: [Cell Division Cycle](#), [Chromatin Binding](#)

Application Details

Application Notes: DB: 1:500

Restrictions: For Research Use only

Handling

Format: Liquid

Buffer: Purified polyclonal antibody supplied in PBS with 0.09 % (W/V) sodium azide.

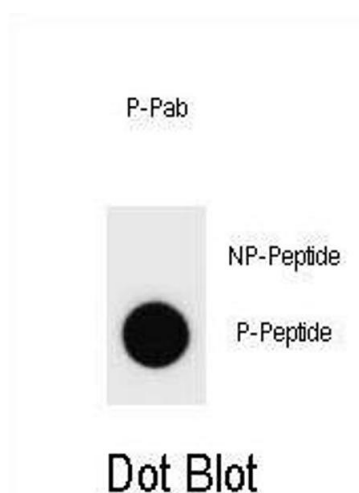
Preservative: Sodium azide

Precaution of Use: This product contains Sodium azide: a POISONOUS AND HAZARDOUS SUBSTANCE which should be handled by trained staff only.

Storage: 4 °C,-20 °C

Expiry Date: 6 months

Images



Dot Blot

Image 1. Dot blot analysis of Rat CCNB3 Antibody (Phospho-specific Pab (ABIN1881169 and ABIN2850537) on nitrocellulose membrane. 50 ng of Phospho-peptide or Non Phospho-peptide per dot were adsorbed. Antibody working concentrations are 0.6 µg per ml.