

Datasheet for ABIN1881173  
**anti-Cyclin B3 antibody (pThr280)**[Go to Product page](#)**1** Image**3** Publications

## Overview

Quantity:	400 µL
Target:	Cyclin B3 (CCNB3)
Binding Specificity:	pThr280
Reactivity:	Human
Host:	Rabbit
Clonality:	Polyclonal
Conjugate:	This Cyclin B3 antibody is un-conjugated
Application:	Dot Blot (DB)

## Product Details

Immunogen:	This CCNB3 Antibody is generated from rabbits immunized with a KLH conjugated synthetic phosphopeptide corresponding to amino acid residues surrounding T280 of human CCNB3.
Clone:	RB42155
Isotype:	Ig Fraction
Purification:	This antibody is purified through a protein A column, followed by peptide affinity purification.

## Target Details

Target:	Cyclin B3 (CCNB3)
Alternative Name:	CCNB3 ( <a href="#">CCNB3 Products</a> )
Background:	The protein encoded by this gene belongs to the highly conserved cyclin family, whose

## Target Details

members are characterized by a dramatic periodicity in protein abundance through the cell cycle. Cyclins function as regulators of CDK kinases. Different cyclins exhibit distinct expression and degradation patterns which contribute to the temporal coordination of each mitotic event. Studies of similar genes in chick and Drosophila suggest that this cyclin may associate with CDC2 and CDK2 kinases, and be required for proper spindle reorganization and restoration of the interphase nucleus. Two transcript variants encoding different isoforms have been found for this gene.

Molecular Weight: 157916

NCBI Accession: [NP\\_149020](#), [NP\\_391990](#)

UniProt: [Q8WWL7](#)

Pathways: [Cell Division Cycle](#), [Chromatin Binding](#)

## Application Details

Application Notes: DB: 1:500

Restrictions: For Research Use only

## Handling

Format: Liquid

Buffer: Purified polyclonal antibody supplied in PBS with 0.09 % (W/V) sodium azide.

Preservative: Sodium azide

Precaution of Use: This product contains Sodium azide: a POISONOUS AND HAZARDOUS SUBSTANCE which should be handled by trained staff only.

Storage: 4 °C, -20 °C

Expiry Date: 6 months

## Publications

Product cited in: Sun, Sun, Chen, Liao, He, Wang, Chen, Hu, Qiu: "microRNA-27b shuttled by mesenchymal stem cell-derived exosomes prevents sepsis by targeting JMJD3 and downregulating NF-κB signaling pathway." in: **Stem cell research & therapy**, Vol. 12, Issue 1, pp. 14, (2021) ([PubMed](#)).

Reithmair, Buschmann, Märte, Kirchner, Hagl, Kaufmann, Pfob, Chouker, Steinlein, Pfaffl,

## Publications

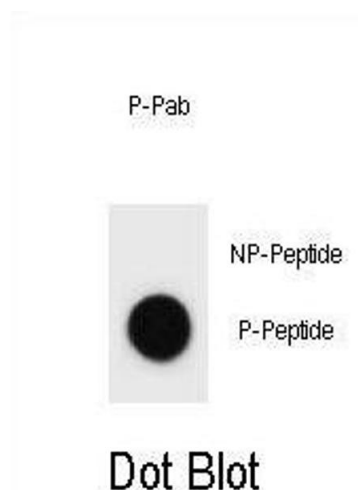
Schelling: "Cellular and extracellular miRNAs are blood-compartment-specific diagnostic targets in sepsis." in: **Journal of cellular and molecular medicine**, Vol. 21, Issue 10, pp. 2403-2411, (2018) ([PubMed](#)).

Youn, Friesen, Kishimoto, Henne, Kurat, Ye, Ceccarelli, Sicheri, Kohlwein, McMahon, Andrews: "Dissecting BAR domain function in the yeast Amphiphysins Rvs161 and Rvs167 during endocytosis." in: **Molecular biology of the cell**, Vol. 21, Issue 17, pp. 3054-69, (2010) ([PubMed](#)).

Qian, Shi, Pang, Wu, Yu, Li, Wang, Zhou: "[Identification and expression of two new secretory proteins associated with prostate cancer]." in: **Yi chuan = Hereditas / Zhongguo yi chuan xue hui bian ji**, Vol. 32, Issue 3, pp. 235-41, (2010) ([PubMed](#)).

Hwangbo, Kim, Lee, Lee: "Activation of the integrin effector kinase focal adhesion kinase in cancer cells is regulated by crosstalk between protein kinase Calpha and the PDZ adapter protein mda-9/Syntenin." in: **Cancer research**, Vol. 70, Issue 4, pp. 1645-55, (2010) ([PubMed](#)).

## Images



### Dot Blot

**Image 1.** Dot blot analysis of CCNB3 Antibody (Phospho ) Phospho-specific Pab (ABIN1881173 and ABIN2839952) on nitrocellulose membrane. 50 ng of Phospho-peptide or Non Phospho-peptide per dot were adsorbed. Antibody working concentrations are 0.6 µg per ml.