

Datasheet for ABIN1881178  
**anti-Cyclin D3 antibody (C-Term)**

## 3 Images

[Go to Product page](#)

## Overview

Quantity:	400 µL
Target:	Cyclin D3 (CCND3)
Binding Specificity:	AA 252-281, C-Term
Reactivity:	Human, Mouse
Host:	Rabbit
Clonality:	Polyclonal
Conjugate:	This Cyclin D3 antibody is un-conjugated
Application:	Western Blotting (WB), Immunohistochemistry (Paraffin-embedded Sections) (IHC (p))

## Product Details

Immunogen:	This CCND3 antibody is generated from rabbits immunized with a KLH conjugated synthetic peptide between 252-281 amino acids from the C-terminal region of human CCND3.
Clone:	RB43029
Isotype:	Ig Fraction
Predicted Reactivity:	B
Purification:	This antibody is purified through a protein A column, followed by peptide affinity purification.

## Target Details

Target:	Cyclin D3 (CCND3)
Alternative Name:	CCND3 ( <a href="#">CCND3 Products</a> )

## Target Details

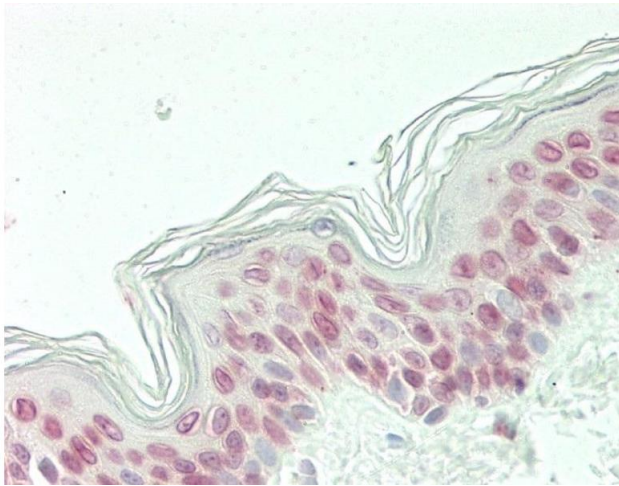
Background:	Regulatory component of the cyclin D3-CDK4 (DC) complex that phosphorylates and inhibits members of the retinoblastoma (RB) protein family including RB1 and regulates the cell-cycle during G(1)/S transition. Phosphorylation of RB1 allows dissociation of the transcription factor E2F from the RB/E2F complex and the subsequent transcription of E2F target genes which are responsible for the progression through the G(1) phase. Hypophosphorylates RB1 in early G(1) phase. Cyclin D-CDK4 complexes are major integrators of various mitogenic and antimitogenic signals. Also substrate for SMAD3, phosphorylating SMAD3 in a cell-cycle-dependent manner and repressing its transcriptional activity. Component of the ternary complex, cyclin D3/CDK4/CDKN1B, required for nuclear translocation and activity of the cyclin D-CDK4 complex.
Molecular Weight:	32520
NCBI Accession:	<a href="#">NP_001129489</a> , <a href="#">NP_001129597</a> , <a href="#">NP_001129598</a> , <a href="#">NP_001751</a>
UniProt:	<a href="#">P30281</a>
Pathways:	<a href="#">Cell Division Cycle</a> , <a href="#">Mitotic G1-G1/S Phases</a> , <a href="#">Glycosaminoglycan Metabolic Process</a>

## Application Details

Application Notes:	WB: 1:1000. WB: 1:1000. IHC-P: 1:100
Restrictions:	For Research Use only

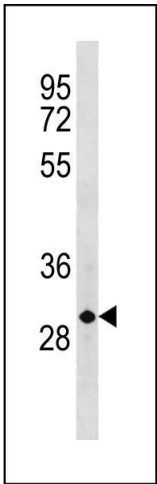
## Handling

Format:	Liquid
Buffer:	Purified polyclonal antibody supplied in PBS with 0.09 % (W/V) sodium azide.
Preservative:	Sodium azide
Precaution of Use:	This product contains Sodium azide: a POISONOUS AND HAZARDOUS SUBSTANCE which should be handled by trained staff only.
Storage:	4 °C, -20 °C
Expiry Date:	6 months



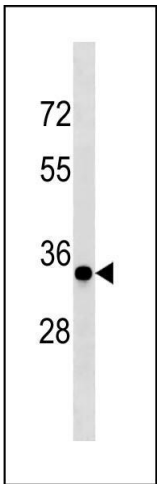
#### Immunohistochemistry (Paraffin-embedded Sections)

**Image 1.** Formalin-fixed and paraffin-embedded H.skin tissue reacted with CCND3 Antibody (C-term ) (ABIN1881178 and ABIN2843328).



#### Western Blotting

**Image 2.** CCND3 Antibody (C-term ) (ABIN1881178 and ABIN2843328) western blot analysis in MDA-M cell line lysates (35 µg/lane). This demonstrates the CCND3 antibody detected the CCND3 protein (arrow).



#### Western Blotting

**Image 3.** CCND3 Antibody (C-term ) (ABIN1881178 and ABIN2843328) western blot analysis in mouse NIH-3T3 cell line lysates (35 µg/lane). This demonstrates the CCND3 antibody detected the CCND3 protein (arrow).