

Datasheet for ABIN1881179
anti-Cyclin D3 antibody (pThr283)[Go to Product page](#)

1 Image

4 Publications

Overview

Quantity:	400 µL
Target:	Cyclin D3 (CCND3)
Binding Specificity:	pThr283
Reactivity:	Human
Host:	Rabbit
Clonality:	Polyclonal
Conjugate:	This Cyclin D3 antibody is un-conjugated
Application:	Dot Blot (DB)

Product Details

Immunogen:	This CCND3 Antibody is generated from rabbits immunized with a KLH conjugated synthetic phosphopeptide corresponding to amino acid residues surrounding T283 of human CCND3.
Clone:	RB42083
Isotype:	Ig Fraction
Predicted Reactivity:	B, M, Rat
Purification:	This antibody is purified through a protein A column, followed by peptide affinity purification.

Target Details

Target:	Cyclin D3 (CCND3)
Alternative Name:	CCND3 (CCND3 Products)

Target Details

Background:	The protein encoded by this gene belongs to the highly conserved cyclin family, whose members are characterized by a dramatic periodicity in protein abundance through the cell cycle. Cyclins function as regulators of CDK kinases. Different cyclins exhibit distinct expression and degradation patterns which contribute to the temporal coordination of each mitotic event. This cyclin forms a complex with and functions as a regulatory subunit of CDK4 or CDK6, whose activity is required for cell cycle G1/S transition. This protein has been shown to interact with and be involved in the phosphorylation of tumor suppressor protein Rb. The CDK4 activity associated with this cyclin was reported to be necessary for cell cycle progression through G2 phase into mitosis after UV radiation. Several transcript variants encoding different isoforms have been found for this gene.
Molecular Weight:	32520
NCBI Accession:	NP_001129489 , NP_001129597 , NP_001129598 , NP_001751
UniProt:	P30281
Pathways:	Cell Division Cycle , Mitotic G1-G1/S Phases , Glycosaminoglycan Metabolic Process

Application Details

Application Notes:	DB: 1:500
Restrictions:	For Research Use only

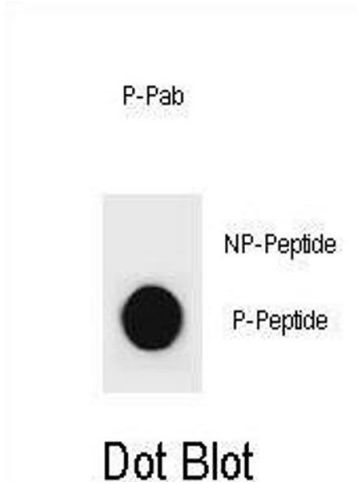
Handling

Format:	Liquid
Buffer:	Purified polyclonal antibody supplied in PBS with 0.09 % (W/V) sodium azide.
Preservative:	Sodium azide
Precaution of Use:	This product contains Sodium azide: a POISONOUS AND HAZARDOUS SUBSTANCE which should be handled by trained staff only.
Storage:	4 °C, -20 °C
Expiry Date:	6 months

Publications

Product cited in:	Maeda, Inoguchi, Takei, Sawada, Sasaki, Fujii, Kobayashi, Urata, Nishiyama, Takayanagi: " Inhibition of chymase protects against diabetes-induced oxidative stress and renal dysfunction
-------------------	---

in hamsters." in: **American journal of physiology. Renal physiology**, Vol. 299, Issue 6, pp. F1328-38, (2010) ([PubMed](#)).



Dot Blot

Image 1. Dot blot analysis of CCND3 Antibody (Phospho) Phospho-specific Pab (ABIN1881179 and ABIN2839966) on nitrocellulose membrane. 50 ng of Phospho-peptide or Non Phospho-peptide per dot were adsorbed. Antibody working concentrations are 0.6 µg per ml.