



[Go to Product page](#)

Datasheet for ABIN1881199

anti-CHORDC1 antibody (AA 127-156)

1 Image

3 Publications

Overview

Quantity:	400 µL
Target:	CHORDC1
Binding Specificity:	AA 127-156
Reactivity:	Human
Host:	Rabbit
Clonality:	Polyclonal
Conjugate:	This CHORDC1 antibody is un-conjugated
Application:	Western Blotting (WB)

Product Details

Immunogen:	This CHORDC1 antibody is generated from rabbits immunized with a KLH conjugated synthetic peptide between 127-156 amino acids from the Central region of human CHORDC1.
Clone:	RB41790
Isotype:	Ig Fraction
Purification:	This antibody is purified through a protein A column, followed by peptide affinity purification.

Target Details

Target:	CHORDC1
Alternative Name:	CHORDC1 (CHORDC1 Products)
Background:	CHORDC1 may play a role in the regulation of NOD1 via its interaction with HSP90AA1 (By

Target Details

similarity).

Molecular Weight: 37490

NCBI Accession: [NP_001137545, NP_036256](#)

UniProt: [Q9UHD1](#)

Application Details

Application Notes: WB: 1:1000

Restrictions: For Research Use only

Handling

Format: Liquid

Buffer: Purified polyclonal antibody supplied in PBS with 0.09 % (W/V) sodium azide.

Preservative: Sodium azide

Precaution of Use: This product contains Sodium azide: a POISONOUS AND HAZARDOUS SUBSTANCE which should be handled by trained staff only.

Storage: 4 °C, -20 °C

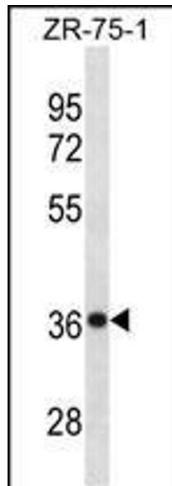
Expiry Date: 6 months

Publications

Product cited in: Xiang, Jiang, Liu, Zhang, Zhu: "hMan2c1 transgene promotes tumor progress in mice." in: **Transgenic research**, Vol. 19, Issue 1, pp. 67-75, (2010) ([PubMed](#)).

Tian, Ju, Zhou, Liu, Zhu: "Inhibition of alpha-mannosidase Man2c1 gene expression suppresses growth of esophageal carcinoma cells through mitotic arrest and apoptosis." in: **Cancer science**, Vol. 99, Issue 12, pp. 2428-34, (2008) ([PubMed](#)).

Qu, Ju, Chen, Shi, Xiang, Zhou, Tian, Liu, Zhu: "Inhibition of the alpha-mannosidase Man2c1 gene expression enhances adhesion of Jurkat cells." in: **Cell research**, Vol. 16, Issue 7, pp. 622-31, (2006) ([PubMed](#)).



Western Blotting

Image 1. CHORDC1 Antibody (Center) (ABIN1881199 and ABIN2838864) western blot analysis in ZR-75-1 cell line lysates (35 μ g/lane). This demonstrates the CHORDC1 antibody detected the CHORDC1 protein (arrow).