

Datasheet for ABIN1881207

**anti-Chloride Channel 5 antibody (N-Term)****1** Image**4** Publications[Go to Product page](#)

## Overview

Quantity:	400 µL
Target:	Chloride Channel 5 (CLCN5)
Binding Specificity:	AA 15-41, N-Term
Reactivity:	Human
Host:	Rabbit
Clonality:	Polyclonal
Conjugate:	This Chloride Channel 5 antibody is un-conjugated
Application:	Western Blotting (WB)

## Product Details

Immunogen:	This CLCN5 antibody is generated from rabbits immunized with a KLH conjugated synthetic peptide between 15-41 amino acids from the N-terminal region of human CLCN5.
Clone:	RB42009
Isotype:	Ig Fraction
Predicted Reactivity:	M, Pig, Rb, Rat
Purification:	This antibody is purified through a protein A column, followed by peptide affinity purification.

## Target Details

Target:	Chloride Channel 5 (CLCN5)
Alternative Name:	CLCN5 ( <a href="#">CLCN5 Products</a> )

## Target Details

**Background:** This gene encodes a member of the CIC family of chloride ion channels and ion transporters. Mutations in this gene have been found in Dent disease and renal tubular disorders complicated by nephrolithiasis. Alternatively spliced transcript variants encoding different isoforms have been found for this gene. [provided by RefSeq].

**Molecular Weight:** 90785

**NCBI Accession:** [NP\\_000075](#), [NP\\_001121370](#), [NP\\_001121371](#), [NP\\_001269092](#)

**UniProt:** [P51795](#)

## Application Details

**Application Notes:** WB: 1:1000

**Restrictions:** For Research Use only

## Handling

**Format:** Liquid

**Buffer:** Purified polyclonal antibody supplied in PBS with 0.09 % (W/V) sodium azide.

**Preservative:** Sodium azide

**Precaution of Use:** This product contains Sodium azide: a POISONOUS AND HAZARDOUS SUBSTANCE which should be handled by trained staff only.

**Storage:** 4 °C, -20 °C

**Expiry Date:** 6 months

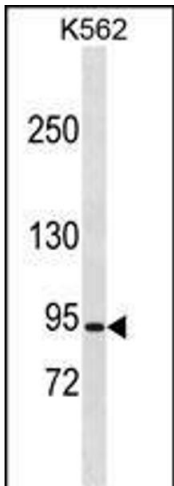
## Publications

**Product cited in:** Xiang, Jiang, Liu, Zhang, Zhu: "hMan2c1 transgene promotes tumor progress in mice." in: **Transgenic research**, Vol. 19, Issue 1, pp. 67-75, (2010) ([PubMed](#)).

Tian, Ju, Zhou, Liu, Zhu: "Inhibition of alpha-mannosidase Man2c1 gene expression suppresses growth of esophageal carcinoma cells through mitotic arrest and apoptosis." in: **Cancer science**, Vol. 99, Issue 12, pp. 2428-34, (2008) ([PubMed](#)).

Qu, Ju, Chen, Shi, Xiang, Zhou, Tian, Liu, Zhu: "Inhibition of the alpha-mannosidase Man2c1 gene expression enhances adhesion of Jurkat cells." in: **Cell research**, Vol. 16, Issue 7, pp. 622-

31, (2006) ([PubMed](#)).



**Western Blotting**

**Image 1.** CLCN5 Antibody (N-term) (ABIN1881207 and ABIN2838919) western blot analysis in K562 cell line lysates (35 µg/lane). This demonstrates the CLCN5 antibody detected the CLCN5 protein (arrow).