



[Go to Product page](#)

Datasheet for ABIN1881209
anti-CLEC19A antibody (AA 54-80)

1 Image

Overview

| | |
|----------------------|--|
| Quantity: | 400 µL |
| Target: | CLEC19A |
| Binding Specificity: | AA 54-80 |
| Reactivity: | Human |
| Host: | Rabbit |
| Clonality: | Polyclonal |
| Conjugate: | This CLEC19A antibody is un-conjugated |
| Application: | Western Blotting (WB) |

Product Details

| | |
|---------------|---|
| Immunogen: | This CLEC19A antibody is generated from rabbits immunized with a KLH conjugated synthetic peptide between 54-80 amino acids from the Central region of human CLEC19A. |
| Clone: | RB42927 |
| Isotype: | Ig Fraction |
| Purification: | This antibody is purified through a protein A column, followed by peptide affinity purification. |

Target Details

| | |
|-------------------|---|
| Target: | CLEC19A |
| Alternative Name: | CLEC19A (CLEC19A Products) |
| Background: | The function of this protein remains unknown. |

Target Details

UniProt: [Q6UXS0](#)

Application Details

Application Notes: WB: 1:1000

Restrictions: For Research Use only

Handling

Format: Liquid

Buffer: Purified polyclonal antibody supplied in PBS with 0.09 % (W/V) sodium azide.

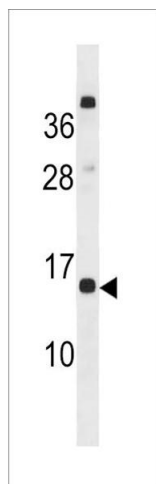
Preservative: Sodium azide

Precaution of Use: This product contains Sodium azide: a POISONOUS AND HAZARDOUS SUBSTANCE which should be handled by trained staff only.

Storage: 4 °C,-20 °C

Expiry Date: 6 months

Images



Western Blotting

Image 1. CLEC19A Antibody (Center) (ABIN1881209 and ABIN2843311) western blot analysis in MCF-7 cell line lysates (35 µg/lane). This demonstrates the CLEC19A antibody detected the CLEC19A protein (arrow).