

Datasheet for ABIN1881210
anti-CLIC1 antibody (AA 136-166)[Go to Product page](#)

1 Image

3 Publications

Overview

Quantity:	400 µL
Target:	CLIC1
Binding Specificity:	AA 136-166
Reactivity:	Human
Host:	Rabbit
Clonality:	Polyclonal
Conjugate:	This CLIC1 antibody is un-conjugated
Application:	Western Blotting (WB)

Product Details

Immunogen:	This CLIC1 antibody is generated from rabbits immunized with a KLH conjugated synthetic peptide between 136-166 amino acids from the Central region of human CLIC1.
Isotype:	Ig Fraction
Purification:	This antibody is purified through a protein A column, followed by peptide affinity purification.

Target Details

Target:	CLIC1
Alternative Name:	CLIC1 (CLIC1 Products)
Background:	Can insert into membranes and form chloride ion channels. Channel activity depends on the pH . Membrane insertion seems to be redox-regulated and may occur only under oxydizing conditions. Involved in regulation of the cell cycle.

Target Details

Molecular Weight:	26923
NCBI Accession:	NP_001279
UniProt:	O00299

Application Details

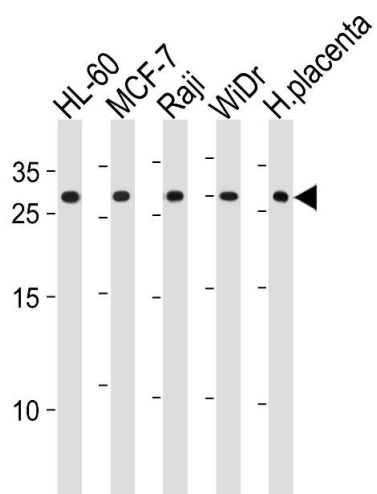
Application Notes:	WB: 1:1000
Restrictions:	For Research Use only

Handling

Format:	Liquid
Buffer:	Purified polyclonal antibody supplied in PBS with 0.09 % (W/V) sodium azide.
Preservative:	Sodium azide
Precaution of Use:	This product contains Sodium azide: a POISONOUS AND HAZARDOUS SUBSTANCE which should be handled by trained staff only.
Storage:	4 °C,-20 °C
Expiry Date:	6 months

Publications

Product cited in:	Maeda, Inoguchi, Takei, Sawada, Sasaki, Fujii, Kobayashi, Urata, Nishiyama, Takayanagi: "Inhibition of chymase protects against diabetes-induced oxidative stress and renal dysfunction in hamsters." in: American journal of physiology. Renal physiology , Vol. 299, Issue 6, pp. F1328-38, (2010) (PubMed).
-------------------	---



Western Blotting

Image 1. CLIC1 Antibody (Center) (ABIN1881210 and ABIN2843618) western blot analysis in HL-60,MCF-7,Raji,WiDr cell line and human placenta tissue lysates (35 µg/lane).This demonstrates the CLIC1 antibody detected the CLIC1 protein (arrow).