

Datasheet for ABIN1881216  
**anti-CNBP antibody (AA 91-118)**[Go to Product page](#)

2 Images

4 Publications

## Overview

Quantity:	400 µL
Target:	CNBP
Binding Specificity:	AA 91-118
Reactivity:	Human, Rat
Host:	Rabbit
Clonality:	Polyclonal
Conjugate:	This CNBP antibody is un-conjugated
Application:	Western Blotting (WB), Immunohistochemistry (Paraffin-embedded Sections) (IHC (p))

## Product Details

Immunogen:	This CNBP antibody is generated from rabbits immunized with a KLH conjugated synthetic peptide between 91-118 amino acids from the Central region of human CNBP.
Clone:	RB43101
Isotype:	Ig Fraction
Predicted Reactivity:	B, C, M
Purification:	This antibody is purified through a protein A column, followed by peptide affinity purification.

## Target Details

Target:	CNBP
Alternative Name:	CNBP ( <a href="#">CNBP Products</a> )

## Target Details

Background:	This gene encodes a nucleic-acid binding protein with seven zinc-finger domains. The protein has a preference for binding single stranded DNA and RNA. The protein functions in cap-independent translation of ornithine decarboxylase mRNA, and may also function in sterol-mediated transcriptional regulation. A CCTG expansion in the first intron of this gene results in myotonic dystrophy type 2. Multiple transcript variants encoding different isoforms have been found for this gene.
Molecular Weight:	19463
NCBI Accession:	<a href="#">NP_001120664</a> , <a href="#">NP_001120665</a> , <a href="#">NP_001120666</a> , <a href="#">NP_001120668</a> , <a href="#">NP_003409</a>
UniProt:	<a href="#">P62633</a>

## Application Details

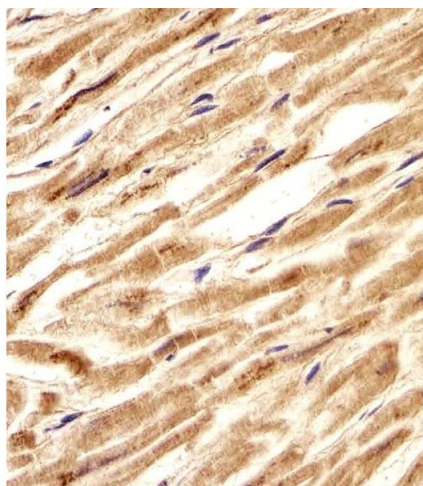
Application Notes:	WB: 1:1000. IHC-P: 1:25
Restrictions:	For Research Use only

## Handling

Format:	Liquid
Buffer:	Purified polyclonal antibody supplied in PBS with 0.09 % (W/V) sodium azide.
Preservative:	Sodium azide
Precaution of Use:	This product contains Sodium azide: a POISONOUS AND HAZARDOUS SUBSTANCE which should be handled by trained staff only.
Storage:	4 °C,-20 °C
Expiry Date:	6 months

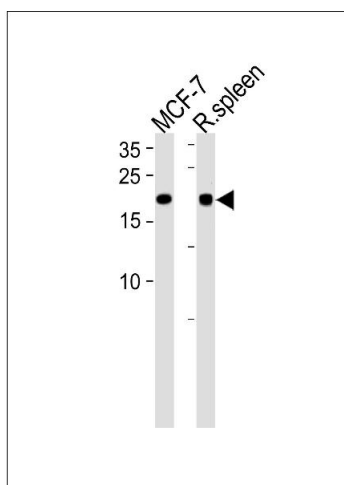
## Publications

Product cited in:	Si, Ali, Latip, Fauzi, Budin, Zainalabidin: "Roselle is cardioprotective in diet-induced obesity rat model with myocardial infarction." in: <b>Life sciences</b> , Vol. 191, pp. 157-165, (2017) ( <a href="#">PubMed</a> ).
	Yida, Imam, Ismail, Ooi, Sarega, Azmi, Ismail, Chan, Hou, Yusuf: "Edible Bird's Nest Prevents High Fat Diet-Induced Insulin Resistance in Rats." in: <b>Journal of diabetes research</b> , Vol. 2015, pp. 760535, (2016) ( <a href="#">PubMed</a> ).



#### Immunohistochemistry (Paraffin-embedded Sections)

**Image 1.** Immunohistochemical analysis of paraffin-embedded H. heart section using CNBP Antibody (Center) (ABIN1881216 and ABIN2839107). (ABIN1881216 and ABIN2839107) was diluted at 1:25 dilution. A undiluted biotinylated goat polyvalent antibody was used as the secondary, followed by DAB staining.



#### Western Blotting

**Image 2.** CNBP Antibody (Center) (ABIN1881216 and ABIN2839107) western blot analysis in MCF-7 cell line and rat spleen tissue lysates (35 µg/lane). This demonstrates the CNBP antibody detected the CNBP protein (arrow).