

Datasheet for ABIN1881220

anti-COL10A1 antibody (N-Term)**1** Image**5** Publications[Go to Product page](#)

Overview

Quantity:	400 µL
Target:	COL10A1
Binding Specificity:	AA 29-58, N-Term
Reactivity:	Human
Host:	Rabbit
Clonality:	Polyclonal
Conjugate:	This COL10A1 antibody is un-conjugated
Application:	Western Blotting (WB)

Product Details

Immunogen:	This COL10A1 antibody is generated from rabbits immunized with a KLH conjugated synthetic peptide between 29-58 amino acids from the N-terminal region of human COL10A1.
Clone:	RB40406
Isotype:	Ig Fraction
Purification:	This antibody is purified through a protein A column, followed by peptide affinity purification.

Target Details

Target:	COL10A1
Alternative Name:	COL10A1 (COL10A1 Products)
Background:	This gene encodes the alpha chain of type X collagen, a short chain collagen expressed by

Target Details

hypertrophic chondrocytes during endochondral ossification. Unlike type VIII collagen, the other short chain collagen, type X collagen is a homotrimer. Mutations in this gene are associated with Schmid type metaphyseal chondrodysplasia (SMCD) and Japanese type spondylometaphyseal dysplasia (SMD).

Molecular Weight: 66158

NCBI Accession: [NP_000484](#)

UniProt: [Q03692](#)

Application Details

Application Notes: WB: 1:1000

Restrictions: For Research Use only

Handling

Format: Liquid

Buffer: Purified polyclonal antibody supplied in PBS with 0.09 % (W/V) sodium azide.

Preservative: Sodium azide

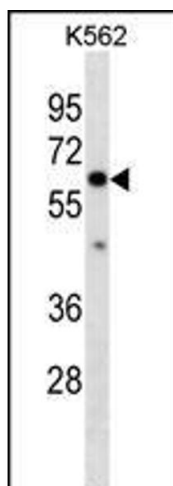
Precaution of Use: This product contains Sodium azide: a POISONOUS AND HAZARDOUS SUBSTANCE which should be handled by trained staff only.

Storage: 4 °C, -20 °C

Expiry Date: 6 months

Publications

Product cited in: Maeda, Inoguchi, Takei, Sawada, Sasaki, Fujii, Kobayashi, Urata, Nishiyama, Takayanagi: "Inhibition of chymase protects against diabetes-induced oxidative stress and renal dysfunction in hamsters." in: **American journal of physiology. Renal physiology**, Vol. 299, Issue 6, pp. F1328-38, (2010) ([PubMed](#)).



Western Blotting

Image 1. COL10A1 Antibody (N-term) (ABIN1881220 and ABIN2838380) western blot analysis in K562 cell line lysates (35 µg/lane). This demonstrates the COL10A1 antibody detected the COL10A1 protein (arrow).