



[Go to Product page](#)

Datasheet for ABIN1881243
anti-Cwc27 antibody (C-Term)

1 Image

Overview

Quantity:	400 µL
Target:	Cwc27
Binding Specificity:	AA 411-437, C-Term
Reactivity:	Human
Host:	Rabbit
Clonality:	Polyclonal
Conjugate:	This Cwc27 antibody is un-conjugated
Application:	Western Blotting (WB)

Product Details

Immunogen:	This CWC27 antibody is generated from rabbits immunized with a KLH conjugated synthetic peptide between 411-437 amino acids from the C-terminal region of human CWC27.
Clone:	RB42879
Isotype:	Ig Fraction
Predicted Reactivity:	B, Pr
Purification:	This antibody is purified through a protein A column, followed by peptide affinity purification.

Target Details

Target:	Cwc27
Alternative Name:	CWC27 (Cwc27 Products)

Target Details

Background:	PPLases accelerate the folding of proteins (By similarity).
Molecular Weight:	53847
NCBI Accession:	NP_005860
UniProt:	Q6UX04
Pathways:	SARS-CoV-2 Protein Interactome

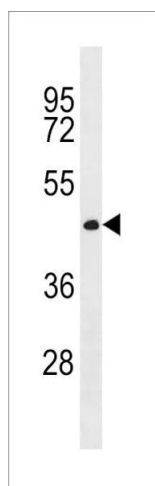
Application Details

Application Notes:	WB: 1:1000
Restrictions:	For Research Use only

Handling

Format:	Liquid
Buffer:	Purified polyclonal antibody supplied in PBS with 0.09 % (W/V) sodium azide.
Preservative:	Sodium azide
Precaution of Use:	This product contains Sodium azide: a POISONOUS AND HAZARDOUS SUBSTANCE which should be handled by trained staff only.
Storage:	4 °C,-20 °C
Expiry Date:	6 months

Images



Western Blotting

Image 1. CWC27 Antibody (C-term) (ABIN1881243 and ABIN2843291) western blot analysis in MDA-M cell line lysates (35 µg/lane). This demonstrates the CWC27 antibody detected the CWC27 protein (arrow).