



[Go to Product page](#)

Datasheet for ABIN1881245

## anti-CXCR5 antibody (N-Term)

1 Image

3 Publications

### Overview

Quantity:	400 µL
Target:	CXCR5
Binding Specificity:	AA 1-30, N-Term
Reactivity:	Human
Host:	Rabbit
Clonality:	Polyclonal
Conjugate:	This CXCR5 antibody is un-conjugated
Application:	Western Blotting (WB)

### Product Details

Immunogen:	This CXCR5 antibody is generated from rabbits immunized with a KLH conjugated synthetic peptide between 1-30 amino acids from the N-terminal region of human CXCR5.
Clone:	RB41684
Isotype:	Ig Fraction
Purification:	This antibody is purified through a protein A column, followed by peptide affinity purification.

### Target Details

Target:	CXCR5
Alternative Name:	CXCR5 ( <a href="#">CXCR5 Products</a> )
Background:	This gene was identified as a gene specifically expressed in Burkitt's lymphoma and lymphatic

## Target Details

---

tissues. The protein encoded by this gene is predicted to be a seven transmembrane G protein-coupled receptor and belongs to the CXC chemokine receptor family. BLC, a B-lymphocyte chemoattractant, was identified to be a specific ligand for this receptor. Studies of this gene and its mouse counterpart strongly suggest the essential function of this gene in B cell migration and localization within specific anatomic compartments, such as follicles in lymph nodes as well as in spleen. Two alternatively spliced variants of this gene exist.

Molecular Weight: 41955

NCBI Accession: [NP\\_001707](#), [NP\\_116743](#)

UniProt: [P32302](#)

## Application Details

---

Application Notes: WB: 1:1000

Restrictions: For Research Use only

## Handling

---

Format: Liquid

Buffer: Purified polyclonal antibody supplied in PBS with 0.09 % (W/V) sodium azide.

Preservative: Sodium azide

Precaution of Use: This product contains Sodium azide: a POISONOUS AND HAZARDOUS SUBSTANCE which should be handled by trained staff only.

Storage: 4 °C,-20 °C

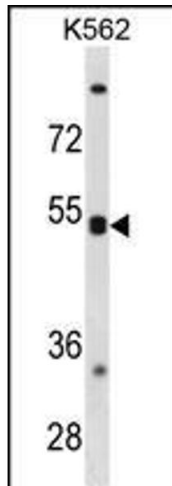
Expiry Date: 6 months

## Publications

---

Product cited in: Si, Ali, Latip, Fauzi, Budin, Zainalabidin: "Roselle is cardioprotective in diet-induced obesity rat model with myocardial infarction." in: **Life sciences**, Vol. 191, pp. 157-165, (2017) ([PubMed](#)).

Yida, Imam, Ismail, Ooi, Sarega, Azmi, Ismail, Chan, Hou, Yusuf: "Edible Bird's Nest Prevents High Fat Diet-Induced Insulin Resistance in Rats." in: **Journal of diabetes research**, Vol. 2015, pp. 760535, (2016) ([PubMed](#)).



### Western Blotting

**Image 1.** CXCR5 Antibody (N-term) (ABIN1881245 and ABIN2838854) western blot analysis in K562 cell line lysates (35 µg/lane). This demonstrates the CXCR5 antibody detected the CXCR5 protein (arrow).