

Datasheet for ABIN1881252
anti-DCLK1 antibody (AA 685-712)[Go to Product page](#)

1 Image

Overview

Quantity:	400 µL
Target:	DCLK1
Binding Specificity:	AA 685-712
Reactivity:	Human
Host:	Rabbit
Clonality:	Polyclonal
Conjugate:	This DCLK1 antibody is un-conjugated
Application:	Western Blotting (WB)

Product Details

Immunogen:	This DCLK1 antibody is generated from rabbits immunized with a KLH conjugated synthetic peptide between 685-712 amino acids of human DCLK1.
Clone:	RB40386
Isotype:	IgG
Predicted Reactivity:	M
Purification:	This antibody is purified through a protein A column, followed by peptide affinity purification.

Target Details

Target:	DCLK1
Alternative Name:	DCLK1 (DCLK1 Products)

Target Details

Background:	Probable kinase that may be involved in a calcium-signaling pathway controlling neuronal migration in the developing brain. May also participate in functions of the mature nervous system.
Molecular Weight:	82224
NCBI Accession:	NP_001182344 , NP_001182345 , NP_004725
UniProt:	O15075

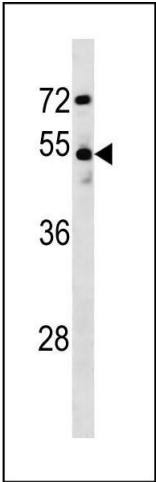
Application Details

Application Notes:	WB: 1:1000
Restrictions:	For Research Use only

Handling

Format:	Liquid
Buffer:	Purified polyclonal antibody supplied in PBS with 0.09 % (W/V) sodium azide.
Preservative:	Sodium azide
Precaution of Use:	This product contains Sodium azide: a POISONOUS AND HAZARDOUS SUBSTANCE which should be handled by trained staff only.
Storage:	4 °C,-20 °C
Expiry Date:	6 months

Images



Western Blotting

Image 1. DCLK1 Antibody (C-term) (ABIN1881252 and ABIN2843216) western blot analysis in MDA-M cell line lysates (35 µg/lane). This demonstrates the DCLK1 antibody detected the DCLK1 protein (arrow).