

Datasheet for ABIN1881253
anti-DCLK2 antibody (N-Term)[Go to Product page](#)

1 Image

3 Publications

Overview

Quantity:	400 µL
Target:	DCLK2
Binding Specificity:	AA 167-196, N-Term
Reactivity:	Human
Host:	Rabbit
Clonality:	Polyclonal
Conjugate:	This DCLK2 antibody is un-conjugated
Application:	Western Blotting (WB)

Product Details

Immunogen:	This DCLK2 antibody is generated from rabbits immunized with a KLH conjugated synthetic peptide between 167-196 amino acids from the N-terminal region of human DCLK2.
Clone:	RB41922
Isotype:	Ig Fraction
Purification:	This antibody is purified through a protein A column, followed by peptide affinity purification.

Target Details

Target:	DCLK2
Alternative Name:	DCLK2 (DCLK2 Products)
Background:	This gene encodes a member of the protein kinase superfamily and the doublecortin family.

Target Details

The protein encoded by this gene contains two N-terminal doublecortin domains, which bind microtubules and regulate microtubule polymerization, a C-terminal serine/threonine protein kinase domain, which shows substantial homology to Ca²⁺/calmodulin-dependent protein kinase, and a serine/proline-rich domain in between the doublecortin and the protein kinase domains, which mediates multiple protein-protein interactions. The microtubule-polymerizing activity of the encoded protein is independent of its protein kinase activity. Mouse studies show that the DCX gene, another family member, and this gene share function in the establishment of hippocampal organization and that their absence results in a severe epileptic phenotype and lethality, as described in human patients with lissencephaly. Multiple alternatively spliced transcript variants have been identified.

Molecular Weight: 83606

NCBI Accession: [NP_001035350](#), [NP_001035351](#)

UniProt: [Q8N568](#)

Application Details

Application Notes: WB: 1:1000

Restrictions: For Research Use only

Handling

Format: Liquid

Buffer: Purified polyclonal antibody supplied in PBS with 0.09 % (W/V) sodium azide.

Preservative: Sodium azide

Precaution of Use: This product contains Sodium azide: a POISONOUS AND HAZARDOUS SUBSTANCE which should be handled by trained staff only.

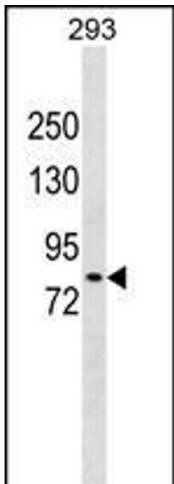
Storage: 4 °C, -20 °C

Expiry Date: 6 months

Publications

Product cited in: Si, Ali, Latip, Fauzi, Budin, Zainalabidin: "Roselle is cardioprotective in diet-induced obesity rat model with myocardial infarction." in: **Life sciences**, Vol. 191, pp. 157-165, (2017) ([PubMed](#)).

Yida, Imam, Ismail, Ooi, Sarega, Azmi, Ismail, Chan, Hou, Yusuf: "Edible Bird's Nest Prevents High Fat Diet-Induced Insulin Resistance in Rats." in: **Journal of diabetes research**, Vol. 2015, pp. 760535, (2016) ([PubMed](#)).



Western Blotting

Image 1. DCLK2 Antibody (N-term) (ABIN1881253 and ABIN2838902) western blot analysis in 293 cell line lysates (35 µg/lane). This demonstrates the DCLK2 antibody detected the DCLK2 protein (arrow).