



[Go to Product page](#)

Datasheet for ABIN1881262
anti-DLX6 antibody (C-Term)

1 Image

1 Publication

Overview

Quantity:	400 µL
Target:	DLX6
Binding Specificity:	AA 167-194, C-Term
Reactivity:	Zebrafish (Danio rerio)
Host:	Rabbit
Clonality:	Polyclonal
Conjugate:	This DLX6 antibody is un-conjugated
Application:	Western Blotting (WB)

Product Details

Immunogen:	This DANRE dlx6a antibody is generated from rabbits immunized with a KLH conjugated synthetic peptide between 167-194 amino acids from the C-terminal region of DANRE dlx6a.
Clone:	RB43931
Isotype:	Ig Fraction
Purification:	This antibody is purified through a protein A column, followed by peptide affinity purification.

Target Details

Target:	DLX6
Alternative Name:	dlx6a (DLX6 Products)
Molecular Weight:	27624

Target Details

NCBI Accession: [NP_571398](#)

UniProt: [Q98877](#)

Application Details

Application Notes: WB: 1:1000

Restrictions: For Research Use only

Handling

Format: Liquid

Buffer: Purified polyclonal antibody supplied in PBS with 0.09 % (W/V) sodium azide.

Preservative: Sodium azide

Precaution of Use: This product contains Sodium azide: a POISONOUS AND HAZARDOUS SUBSTANCE which should be handled by trained staff only.

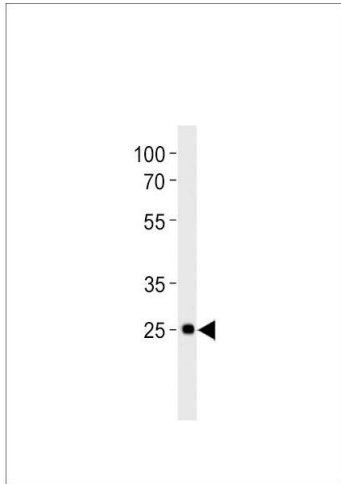
Storage: 4 °C, -20 °C

Expiry Date: 6 months

Publications

Product cited in: Si, Ali, Latip, Fauzi, Budin, Zainalabidin: "Roselle is cardioprotective in diet-induced obesity rat model with myocardial infarction." in: **Life sciences**, Vol. 191, pp. 157-165, (2017) ([PubMed](#)).

Yida, Imam, Ismail, Ooi, Sarega, Azmi, Ismail, Chan, Hou, Yusuf: "Edible Bird's Nest Prevents High Fat Diet-Induced Insulin Resistance in Rats." in: **Journal of diabetes research**, Vol. 2015, pp. 760535, (2016) ([PubMed](#)).



Western Blotting

Image 1. DANRE dlx6a Antibody (C-term) Azb10010a western blot analysis in zebra fish brain tissue lysates (35 µg/lane). This demonstrates the DANRE dlx6a antibody detected the DANRE dlx6a protein (arrow).