

Datasheet for ABIN1881269

anti-DPEP1 antibody (N-Term)[Go to Product page](#)**1** Image

Overview

Quantity:	400 µL
Target:	DPEP1
Binding Specificity:	AA 1-30, N-Term
Reactivity:	Human
Host:	Rabbit
Clonality:	Polyclonal
Conjugate:	This DPEP1 antibody is un-conjugated
Application:	Western Blotting (WB)

Product Details

Immunogen:	This DPEP1 antibody is generated from rabbits immunized with a KLH conjugated synthetic peptide between 1-30 amino acids from the N-terminal region of human DPEP1.
Clone:	RB41566
Isotype:	Ig Fraction
Purification:	This antibody is purified through a protein A column, followed by peptide affinity purification.

Target Details

Target:	DPEP1
Alternative Name:	DPEP1 (DPEP1 Products)
Background:	DPEP1 (EC 3.4.13.11) is a kidney membrane enzyme that hydrolyzes a variety of dipeptides and

Target Details

is implicated in renal metabolism of glutathione and its conjugates, e.g., leukotriene D4 (Kozak and Tate, 1982 [PubMed 6122685]). DPEP1 is responsible for hydrolysis of the beta-lactam ring of antibiotics, such as penem and carbapenem (Campbell et al., 1984 [PubMed 6334084]). Earlier, beta-lactamase enzymes were thought to occur only in bacteria, where their probable function was in protecting the organisms against the action of beta-lactam antibiotics. These antibiotics exhibit selective toxicity against bacteria but virtual inertness against many eukaryotic cells (Adachi et al., 1990 [PubMed 2303490]).

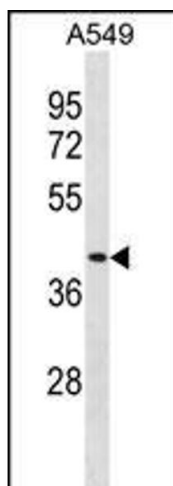
Molecular Weight:	45674
NCBI Accession:	NP_001121613 , NP_004404
UniProt:	P16444
Pathways:	Inositol Metabolic Process

Application Details

Application Notes:	WB: 1:1000
Restrictions:	For Research Use only

Handling

Format:	Liquid
Buffer:	Purified polyclonal antibody supplied in PBS with 0.09 % (W/V) sodium azide.
Preservative:	Sodium azide
Precaution of Use:	This product contains Sodium azide: a POISONOUS AND HAZARDOUS SUBSTANCE which should be handled by trained staff only.
Storage:	4 °C,-20 °C
Expiry Date:	6 months



Western Blotting

Image 1. DPEP1 Antibody (N-term) (ABIN1881269 and ABIN2838707) western blot analysis in A549 cell line lysates (35 µg/lane). This demonstrates the DPEP1 antibody detected the DPEP1 protein (arrow).