

Datasheet for ABIN1881271
anti-DPY19L3 antibody (N-Term)[Go to Product page](#)

1 Image

Overview

Quantity:	400 µL
Target:	DPY19L3
Binding Specificity:	AA 1-30, N-Term
Reactivity:	Human
Host:	Rabbit
Clonality:	Polyclonal
Conjugate:	This DPY19L3 antibody is un-conjugated
Application:	Western Blotting (WB)

Product Details

Immunogen:	This DPY19L3 antibody is generated from rabbits immunized with a KLH conjugated synthetic peptide between 1-30 amino acids from the N-terminal region of human DPY19L3.
Clone:	RB41655
Isotype:	Ig Fraction
Purification:	This antibody is purified through a protein A column, followed by peptide affinity purification.

Target Details

Target:	DPY19L3
Alternative Name:	DPY19L3 (DPY19L3 Products)
Background:	The function of this protein is unknown.

Target Details

Molecular Weight:	83197
NCBI Accession:	NP_001166245 , NP_997208
UniProt:	Q6ZPD9

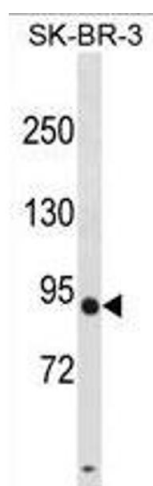
Application Details

Application Notes:	WB: 1:1000
Restrictions:	For Research Use only

Handling

Format:	Liquid
Buffer:	Purified polyclonal antibody supplied in PBS with 0.09 % (W/V) sodium azide.
Preservative:	Sodium azide
Precaution of Use:	This product contains Sodium azide: a POISONOUS AND HAZARDOUS SUBSTANCE which should be handled by trained staff only.
Storage:	4 °C,-20 °C
Expiry Date:	6 months

Images



Western Blotting

Image 1. DPY19L3 Antibody (N-term) (ABIN1881271 and ABIN2838846) western blot analysis in SK-BR-3 cell line lysates (35 µg/lane). This demonstrates the DPY19L3 antibody detected the DPY19L3 protein (arrow).