

Datasheet for ABIN1881272  
**anti-DUSP10 antibody (AA 204-232)**[Go to Product page](#)

1 Image

5 Publications

## Overview

Quantity:	400 µL
Target:	DUSP10
Binding Specificity:	AA 204-232
Reactivity:	Human
Host:	Rabbit
Clonality:	Polyclonal
Conjugate:	This DUSP10 antibody is un-conjugated
Application:	Western Blotting (WB)

## Product Details

Immunogen:	This DUSP10 antibody is generated from rabbits immunized with a KLH conjugated synthetic peptide between 204-232 amino acids from the Central region of human DUSP10.
Clone:	RB41917
Isotype:	Ig Fraction
Predicted Reactivity:	B, M
Purification:	This antibody is purified through a protein A column, followed by peptide affinity purification.

## Target Details

Target:	DUSP10
Alternative Name:	DUSP10 ( <a href="#">DUSP10 Products</a> )

## Target Details

**Background:** Dual specificity protein phosphatases inactivate their target kinases by dephosphorylating both the phosphoserine/threonine and phosphotyrosine residues. They negatively regulate members of the MAPK superfamily (MAPK/ERK, SAPK/JNK, p38), which is associated with cellular proliferation and differentiation. Different members of this family of dual specificity phosphatases show distinct substrate specificities for MAPKs, different tissue distribution and subcellular localization, and different modes of inducibility of their expression by extracellular stimuli. This gene product binds to and inactivates p38 and SAPK/JNK, but not MAPK/ERK. Its subcellular localization is unique, it is evenly distributed in both the cytoplasm and the nucleus. This gene is widely expressed in various tissues and organs, and its expression is elevated by stress stimuli. Three transcript variants encoding two different isoforms have been found for this gene.

**Molecular Weight:** 52642

**NCBI Accession:** [NP\\_009138](#), [NP\\_653329](#), [NP\\_653330](#)

**UniProt:** [Q9Y6W6](#)

## Application Details

**Application Notes:** WB: 1:1000

**Restrictions:** For Research Use only

## Handling

**Format:** Liquid

**Buffer:** Purified polyclonal antibody supplied in PBS with 0.09 % (W/V) sodium azide.

**Preservative:** Sodium azide

**Precaution of Use:** This product contains Sodium azide: a POISONOUS AND HAZARDOUS SUBSTANCE which should be handled by trained staff only.

**Storage:** 4 °C, -20 °C

**Expiry Date:** 6 months

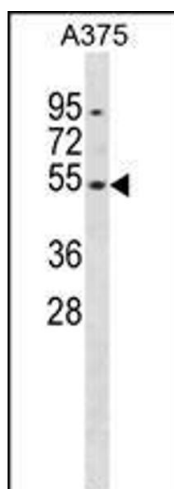
## Publications

**Product cited in:** Si, Ali, Latip, Fauzi, Budin, Zainalabidin: "Roselle is cardioprotective in diet-induced obesity rat model with myocardial infarction." in: **Life sciences**, Vol. 191, pp. 157-165, (2017) ([PubMed](#)).

Yida, Imam, Ismail, Ooi, Sarega, Azmi, Ismail, Chan, Hou, Yusuf: "Edible Bird's Nest Prevents High Fat Diet-Induced Insulin Resistance in Rats." in: **Journal of diabetes research**, Vol. 2015, pp. 760535, (2016) ([PubMed](#)).

## Images

---



### Western Blotting

**Image 1.** DUSP10 Antibody (Center) (ABIN1881272 and ABIN2838898) western blot analysis in cell line lysates (35  $\mu$ g/lane). This demonstrates the DUSP10 antibody detected the DUSP10 protein (arrow).