

Datasheet for ABIN1881314

anti-ERBB3 antibody (pTyr1289)**2** Images**5** Publications[Go to Product page](#)

Overview

Quantity:	400 µL
Target:	ERBB3
Binding Specificity:	pTyr1289
Reactivity:	Human
Host:	Rabbit
Clonality:	Polyclonal
Conjugate:	This ERBB3 antibody is un-conjugated
Application:	Western Blotting (WB), Dot Blot (DB)

Product Details

Immunogen:	This ERBB3 Antibody is generated from rabbits immunized with a KLH conjugated synthetic phosphopeptide corresponding to amino acid residues surrounding Y1289 of human ERBB3.
Clone:	RB25837
Isotype:	Ig Fraction
Purification:	This antibody is purified through a protein A column, followed by peptide affinity purification.

Target Details

Target:	ERBB3
Alternative Name:	ERBB3 (ERBB3 Products)
Background:	This gene encodes a member of the epidermal growth factor receptor (EGFR) family of

Target Details

receptor tyrosine kinases. This membrane-bound protein has a neuregulin binding domain but not an active kinase domain. It therefore can bind this ligand but not convey the signal into the cell through protein phosphorylation. However, it does form heterodimers with other EGF receptor family members which do have kinase activity. Heterodimerization leads to the activation of pathways which lead to cell proliferation or differentiation. Amplification of this gene and/or overexpression of its protein have been reported in numerous cancers, including prostate, bladder, and breast tumors. Alternate transcriptional splice variants encoding different isoforms have been characterized. One isoform lacks the intermembrane region and is secreted outside the cell. This form acts to modulate the activity of the membrane-bound form.

Molecular Weight: 148098

NCBI Accession: [NP_001005915](#), [NP_001973](#)

UniProt: [P21860](#)

Pathways: [RTK Signaling](#), [Fc-epsilon Receptor Signaling Pathway](#), [EGFR Signaling Pathway](#), [Neurotrophin Signaling Pathway](#)

Application Details

Application Notes: WB: 1:1000. DB: 1:500

Restrictions: For Research Use only

Handling

Format: Liquid

Buffer: Purified polyclonal antibody supplied in PBS with 0.09 % (W/V) sodium azide.

Preservative: Sodium azide

Precaution of Use: This product contains Sodium azide: a POISONOUS AND HAZARDOUS SUBSTANCE which should be handled by trained staff only.

Storage: 4 °C, -20 °C

Expiry Date: 6 months

Publications

Product cited in: Huang, Gao, Wang, McManaman, Thor, Yang, Esteva, Liu: "Heterotrimerization of the growth factor receptors erbB2, erbB3, and insulin-like growth factor-i receptor in breast cancer cells

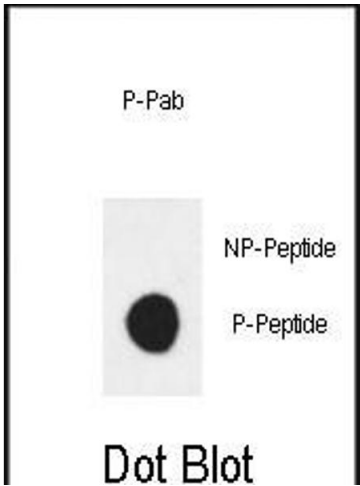
resistant to herceptin." in: **Cancer research**, Vol. 70, Issue 3, pp. 1204-14, (2010) ([PubMed](#)).

Pierce, Ahsan: "Genetic susceptibility to type 2 diabetes is associated with reduced prostate cancer risk." in: **Human heredity**, Vol. 69, Issue 3, pp. 193-201, (2010) ([PubMed](#)).

Carr, Niederer, Williams, Harper, Watts, Lyons, Smith: "Confirmation of the genetic association of CTLA4 and PTPN22 with ANCA-associated vasculitis." in: **BMC medical genetics**, Vol. 10, pp. 121, (2009) ([PubMed](#)).

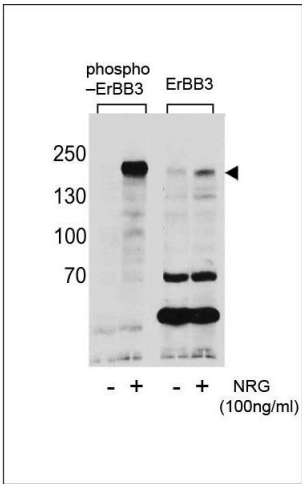
Zhang, Opresko, Shankaran, Chrisler, Wiley, Resat: "HER/ErbB receptor interactions and signaling patterns in human mammary epithelial cells." in: **BMC cell biology**, Vol. 10, pp. 78, (2009) ([PubMed](#)).

Li, Feng, He: "Case-control study of association between the functional candidate gene ERBB3 and schizophrenia in Caucasian population." in: **The world journal of biological psychiatry : the official journal of the World Federation of Societies of Biological Psychiatry**, Vol. 10, Issue 4 Pt 2, pp. 595-8, (2009) ([PubMed](#)).



Dot Blot

Image 1. Dot blot analysis of anti-Phospho-ERBB3 (Tyr1289) Antibody Phospho-specific Pab (ABIN1881314 and ABIN2839805) on nitrocellulose membrane. 50 ng of Phospho-peptide or Non Phospho-peptide per dot were adsorbed. Antibody working concentrations are 0.5 µg per ml.



Western Blotting

Image 2. Western blot analysis of extracts from T47D cells, untreated or treated with NRG using Phospho-ErBB3(Tyr1289)(left) or ErBB3 Antibody (right).