



Datasheet for ABIN1881322  
**anti-ESR2 antibody (AA 211-240)**



[Go to Product page](#)

2 Images

2 Publications

## Overview

Quantity:	400 µL
Target:	ESR2
Binding Specificity:	AA 211-240
Reactivity:	Human, Mouse
Host:	Rabbit
Clonality:	Polyclonal
Conjugate:	This ESR2 antibody is un-conjugated
Application:	Western Blotting (WB)

## Product Details

Immunogen:	This ESR2 antibody is generated from rabbits immunized with a KLH conjugated synthetic peptide between 211-240 amino acids from the Central region of human ESR2.
Clone:	RB41114
Isotype:	Ig Fraction
Purification:	This antibody is purified through a protein A column, followed by peptide affinity purification.

## Target Details

Target:	ESR2
Alternative Name:	ESR2 ( <a href="#">ESR2 Products</a> )
Background:	This gene encodes a member of the family of estrogen receptors and superfamily of nuclear

## Target Details

---

receptor transcription factors. The gene product contains an N-terminal DNA binding domain and C-terminal ligand binding domain and is localized to the nucleus, cytoplasm, and mitochondria. Upon binding to 17beta-estradiol or related ligands, the encoded protein forms homo- or hetero-dimers that interact with specific DNA sequences to activate transcription. Some isoforms dominantly inhibit the activity of other estrogen receptor family members. Several alternatively spliced transcript variants of this gene have been described, but the full-length nature of some of these variants has not been fully characterized.

Molecular Weight:	59216
NCBI Accession:	<a href="#">NP_001035365</a> , <a href="#">NP_001201831</a> , <a href="#">NP_001201832</a> , <a href="#">NP_001258805</a> , <a href="#">NP_001258806</a> , <a href="#">NP_001428</a>
UniProt:	<a href="#">Q92731</a>
Pathways:	<a href="#">Nuclear Receptor Transcription Pathway</a> , <a href="#">EGFR Signaling Pathway</a> , <a href="#">Intracellular Steroid Hormone Receptor Signaling Pathway</a> , <a href="#">Steroid Hormone Mediated Signaling Pathway</a> , <a href="#">Regulation of Intracellular Steroid Hormone Receptor Signaling</a>

## Application Details

---

Application Notes:	WB: 1:2000. WB: 1:2000
Restrictions:	For Research Use only

## Handling

---

Format:	Liquid
Buffer:	Purified polyclonal antibody supplied in PBS with 0.09 % (W/V) sodium azide.
Preservative:	Sodium azide
Precaution of Use:	This product contains Sodium azide: a POISONOUS AND HAZARDOUS SUBSTANCE which should be handled by trained staff only.
Storage:	4 °C,-20 °C
Expiry Date:	6 months

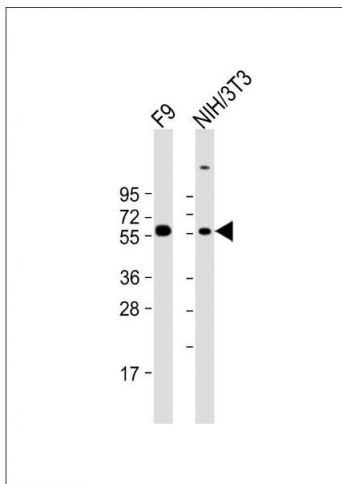
## Publications

---

Product cited in:	Si, Ali, Latip, Fauzi, Budin, Zainalabidin: "Roselle is cardioprotective in diet-induced obesity rat model with myocardial infarction." in: <b>Life sciences</b> , Vol. 191, pp. 157-165, (2017) ( <a href="#">PubMed</a> ).
-------------------	------------------------------------------------------------------------------------------------------------------------------------------------------------------------------------------------------------------------------

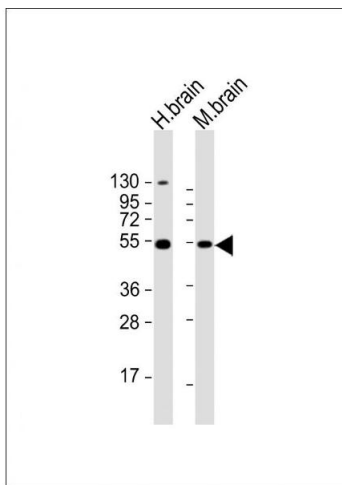
Yida, Imam, Ismail, Ooi, Sarega, Azmi, Ismail, Chan, Hou, Yusuf: "Edible Bird's Nest Prevents High Fat Diet-Induced Insulin Resistance in Rats." in: **Journal of diabetes research**, Vol. 2015, pp. 760535, (2016) ([PubMed](#)).

Images



**Western Blotting**

**Image 1.** All lanes : Anti-ESR2 Antibody (Center) at 1:2000 dilution Lane 1: F9 whole cell lysate Lane 2: NIH/3T3 whole cell lysate Lysates/proteins at 20 µg per lane. Secondary Goat Anti-Rabbit IgG, (H+L), Peroxidase conjugated at 1/10000 dilution. Predicted band size : 59 kDa Blocking/Dilution buffer: 5 % NFDm/TBST.



**Western Blotting**

**Image 2.** All lanes : Anti-ESR2 Antibody (Center) at 1:2000 dilution Lane 1: human brain lysate Lane 2: mouse brain lysate Lysates/proteins at 20 µg per lane. Secondary Goat Anti-Rabbit IgG, (H+L), Peroxidase conjugated at 1/10000 dilution. Predicted band size : 59 kDa Blocking/Dilution buffer: 5 % NFDm/TBST.