



Datasheet for ABIN1881332  
**anti-FAM159A antibody (AA 89-115)**



[Go to Product page](#)

2 Images

Overview

Quantity:	400 µL
Target:	FAM159A
Binding Specificity:	AA 89-115
Reactivity:	Human, Mouse
Host:	Rabbit
Clonality:	Polyclonal
Conjugate:	This FAM159A antibody is un-conjugated
Application:	Western Blotting (WB), Immunofluorescence (IF)

Product Details

Immunogen:	This FAM159A antibody is generated from rabbits immunized with a KLH conjugated synthetic peptide between 89-115 amino acids from the Central region of human FAM159A.
Clone:	RB44836
Isotype:	Ig Fraction
Purification:	This antibody is purified through a protein A column, followed by peptide affinity purification.

Target Details

Target:	FAM159A
Alternative Name:	FAM159A ( <a href="#">FAM159A Products</a> )
Background:	The exact function of this protein remains unknown.

## Target Details

Molecular Weight: 20306

NCBI Accession: [NP\\_001036158](#)

UniProt: [Q6UWV7](#)

## Application Details

Application Notes: IF: 1:25. WB: 1:1000

Restrictions: For Research Use only

## Handling

Format: Liquid

Buffer: Purified polyclonal antibody supplied in PBS with 0.09 % (W/V) sodium azide.

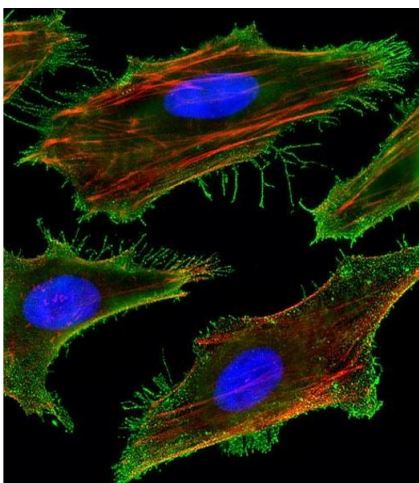
Preservative: Sodium azide

Precaution of Use: This product contains Sodium azide: a POISONOUS AND HAZARDOUS SUBSTANCE which should be handled by trained staff only.

Storage: 4 °C,-20 °C

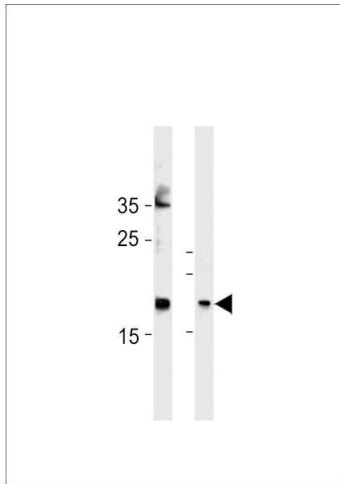
Expiry Date: 6 months

## Images



### Immunofluorescence

**Image 1.** Fluorescent image of HeLa cells stained with FA Antibody (Center) (ABIN1881332 and ABIN2843378). (ABIN1881332 and ABIN2843378) was diluted at 1:25 dilution. An Alexa Fluor 488-conjugated goat anti-rabbit IgG at 1:400 dilution was used as the secondary antibody (green). DI was used to stain the cell nuclear (blue). Cytoplasmic actin was counterstained with Alexa Fluor® 555 conjugated with Phalloidin (red).



### Western Blotting

**Image 2.** FA Antibody (Center) (ABIN1881332 and ABIN2843378) western blot analysis in Hela cell line and mouse bladder tissue lysates (35 µg/lane). This demonstrates the FA antibody detected the FA protein (arrow).