



Datasheet for ABIN1881333  
**anti-FAM26F antibody (C-Term)**



[Go to Product page](#)

2 Images

Overview

Quantity:	400 µL
Target:	FAM26F
Binding Specificity:	AA 266-295, C-Term
Reactivity:	Human
Host:	Rabbit
Clonality:	Polyclonal
Conjugate:	This FAM26F antibody is un-conjugated
Application:	Western Blotting (WB)

Product Details

Immunogen:	This FAM26F antibody is generated from rabbits immunized with a KLH conjugated synthetic peptide between 266-295 amino acids from the C-terminal region of human FAM26F.
Clone:	RB42320
Isotype:	Ig Fraction
Purification:	This antibody is purified through a protein A column, followed by peptide affinity purification.

Target Details

Target:	FAM26F
Alternative Name:	FAM26F ( <a href="#">FAM26F Products</a> )
Background:	Belongs to the FAM26 family.

## Target Details

Molecular Weight: 34458

NCBI Accession: [NP\\_001010919](#)

UniProt: [Q5R3K3](#)

## Application Details

Application Notes: WB: 1:1000. WB: 1:1000

Restrictions: For Research Use only

## Handling

Format: Liquid

Buffer: Purified polyclonal antibody supplied in PBS with 0.09 % (W/V) sodium azide.

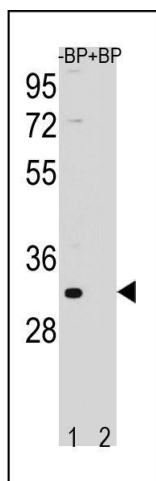
Preservative: Sodium azide

Precaution of Use: This product contains Sodium azide: a POISONOUS AND HAZARDOUS SUBSTANCE which should be handled by trained staff only.

Storage: 4 °C,-20 °C

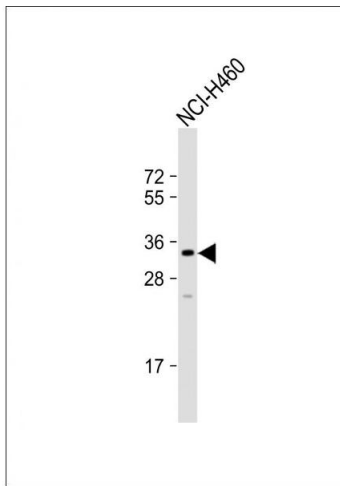
Expiry Date: 6 months

## Images



### Western Blotting

**Image 1.** Western blot analysis of FF Antibody (C-term) Pab (ABIN1881333 and ABIN2843243) pre-incubated without (lane 1) and with (lane 2) blocking peptide in NCI- cell line lysate. FF Antibody (C-term) (arrow) was detected using the purified Pab.



### Western Blotting

**Image 2.** Anti-FF Antibody (C-term) at 1:1000 dilution + NCI- whole cell lysate Lysates/proteins at 20  $\mu$ g per lane. Secondary Goat Anti-Rabbit IgG, (H+L), Peroxidase conjugated at 1/10000 dilution. Predicted band size : 34 kDa Blocking/Dilution buffer: 5 % NFDM/TBST.